



# Weekly Economic Highlights

## TABLE OF CONTENTS

1. OVERVIEW .....	1
2. INTEREST RATES .....	2
3. EQUITY MARKETS.....	3
4. CLEARING AND SETTLEMENT ACTIVITY .....	5
5. ENERGY PRICES .....	5
6. GOLD PM FIX, MOSI-OA-TUNYA GOLD COINS AND GOLD BACKED DIGITAL TOKENS (GBDT).....	5
7. EXTERNAL SECTOR.....	6
8. TOBACCO SALES.....	8

Week Ending  
12<sup>th</sup> June 2026

## 1. OVERVIEW

This bulletin highlights key monetary and financial sector developments for the ending 12<sup>th</sup> June 2026. It reviews performance in the domestic money and capital markets, national payment systems, exchange rates, global commodity prices and tobacco sales, while also assessing factors influencing price and financial stability and overall macroeconomic activity.

Savings and deposit rates for both local and foreign currency remained unchanged across all tenors, reflecting sustained stability. On the lending side, local currency rates for individual clients decreased, while for corporate clients increased. The foreign currency lending rates for most clients decreased, save for individual minimum lending rates which increased.

In the capital markets, both the Zimbabwe Stock Exchange (ZSE) and the Victoria Falls Stock Exchange (VFEX) recorded gains, advancing by 4.04% and 0.61% to close at 404.30 points and 234.99 points, respectively.

The total value of transactions processed through the National Payment Systems platforms during the week ending 12 June 2026 decreased by 13.29% from ZiG56.09 billion reported in the previous week to ZiG48.64 billion. The volume of transactions processed increased by 2.44% from 20.92 million to 21.43 million during the same period under review.

The Zimbabwe Gold (ZiG) appreciated by 0.27% on the Willing-Buyer Willing-Seller (WBWS) Interbank foreign exchange market, from an average of ZiG26.85 per US\$ recorded in the previous week to ZiG26.78 per US\$1, during the week ending 12 June 2026.

International average prices for most selected commodities weakened during the week ending 12<sup>th</sup> June 2026. Gold prices declined due to stronger U.S. dollar strengthened and lower safe-haven demand as market sentiment improved. Platinum and palladium prices weakened driven by low industrial demand, particularly from the automotive sector.

Nickel prices decreased driven by subdued demand from the stainless-steel industry, particularly in China, coupled with ample global supply. Lithium prices decreased following expectations of improved supply conditions and weakening demand.

As of the 69<sup>th</sup> day of the 2026 tobacco selling season, tobacco sales rose by 11% to 325.98 million kilograms, from 292.50 million kilograms sold during the same period in 2025. Total sales revenue, however, was lower by 17%, at US\$816.35 million, compared with US\$982.45 million earned in 2025. Average tobacco prices also fell from US\$3.36 per kilogram in the comparable period of 2025 to US\$2.50 per kilogram.

## 2. INTEREST RATES

### Average commercial bank deposit rates (Local Currency (ZiG) (%))

Deposit rates	22-May-2026	29-May-2026	5-Jun-2026	12-Jun-2026
<b>Savings</b>				
Minimum	4.35	4.35	4.35	4.35
Maximum	4.71	4.71	4.71	4.71
<b>1-month deposit</b>				
Minimum	7.03	7.03	7.03	7.03
Maximum	12.28	12.28	12.28	12.28
<b>3-months deposit</b>				
<b>Minimum</b>	7.73	7.73	7.73	7.73
Maximum	12.88	12.88	12.88	12.88
<b>6-months deposit</b>				
Minimum	7.80	7.80	7.80	7.80
Maximum	12.18	12.18	12.18	12.18
<b>12-months deposit</b>				
Minimum	7.87	7.87	7.87	7.87
Maximum	12.24	12.24	12.24	12.24
<b>Over 1 year</b>				
Minimum	7.88	7.88	7.88	7.88
Maximum	12.91	12.91	12.91	12.91

Source: Reserve Bank of Zimbabwe, 2026

### Average commercial bank deposit rates (Foreign Currency (US\$) (%))

US\$ Deposit rates	22-May-2026	29-May-2026	5-Jun-2026	12-Jun-2026
<b>Savings</b>				
Minimum	2.15	2.15	2.15	2.15
Maximum	2.50	2.50	2.50	2.50
<b>1-month deposit</b>				
Minimum	4.41	4.41	4.41	4.41
Maximum	7.64	7.64	7.64	7.64
<b>3-month deposit</b>				
Minimum	4.95	4.95	4.95	4.95
Maximum	8.55	8.55	8.55	8.55
<b>6-month deposit</b>				
Minimum	5.10	5.10	5.10	5.10
Maximum	8.93	8.93	8.93	8.93
<b>12-Month deposit</b>				
Minimum	5.19	5.19	5.19	5.19
Maximum	9.35	9.35	9.35	9.35
<b>Over 1 year</b>				
Minimum	5.28	5.28	5.28	5.28
Maximum	9.50	9.50	9.50	9.50

Source: Reserve Bank of Zimbabwe, 2026

### Commercial bank weighted lending rates (Local Currency (ZiG) (%))

ZiG Lending rates	22-May-2026	29-May-2026	5-Jun-2026	12-Jun-2026
<b>Individuals</b>				
Minimum	44.52	44.52	44.53	44.49
Maximum	49.82	49.82	49.87	49.83
<b>Corporates</b>				
Minimum	40.36	40.40	40.43	40.50
Maximum	46.13	46.16	46.19	46.42

Source: Reserve Bank of Zimbabwe, 2026

### Commercial bank weighted lending rates (Foreign Currency (US\$) (%))

US\$ Lending rates	22-May-2026	29-May-2026	5-Jun-2026	12-Jun-2026
<b>Individuals</b>				
Minimum	13.87	13.87	13.94	13.96
Maximum	18.57	18.57	18.57	18.56
<b>Corporates</b>				
Minimum	10.13	10.14	10.22	10.14
Maximum	15.81	15.81	15.87	15.76

Source: Reserve Bank of Zimbabwe, 2026

### Commercial banks and building societies mortgage lending rates (%)

Mortgage Lending rates	22-May-2026	29-May-2026	5-Jun-2026	12-Jun-2026
<b>ZiG Lending rates</b>				
Minimum	25.00	25.00	25.00	25.00
Maximum	50.00	50.00	50.00	50.00
<b>US\$ Lending rates</b>				
Minimum	10.00	10.00	10.00	10.00
Maximum	18.00	18.00	18.00	18.00

Source: Reserve Bank of Zimbabwe, 2026

## 3. EQUITY MARKETS

### ZSE Indicators

	All Share Index (points)	Top 10 Index (points)	Top 15 Index (points)	Medium Cap (points)	Small Cap (points)	Mining Index (points)	Grand Market Cap (ZiG billion)	Market Turnover (ZiG million)	Volume of Shares (million)
22-May 26	392.11	385.19	400.66	449.41	100.11	129.42	89.82	233.40	16.30
29-May 26	389.26	384.31	397.90	437.76	100.11	129.42	89.56	67.57	4.59
05-Jun 25	388.60	383.26	397.38	438.79	100.11	129.42	89.58	73.74	11.52
12-Jun 25	404.30	402.83	416.05	438.13	100.11	146.68	93.02	73.15	32.71
<b>Weekly Change (%)</b>	4.04	5.11	4.70	(0.15)	0.00	13.34	3.84	(0.80)	183.99

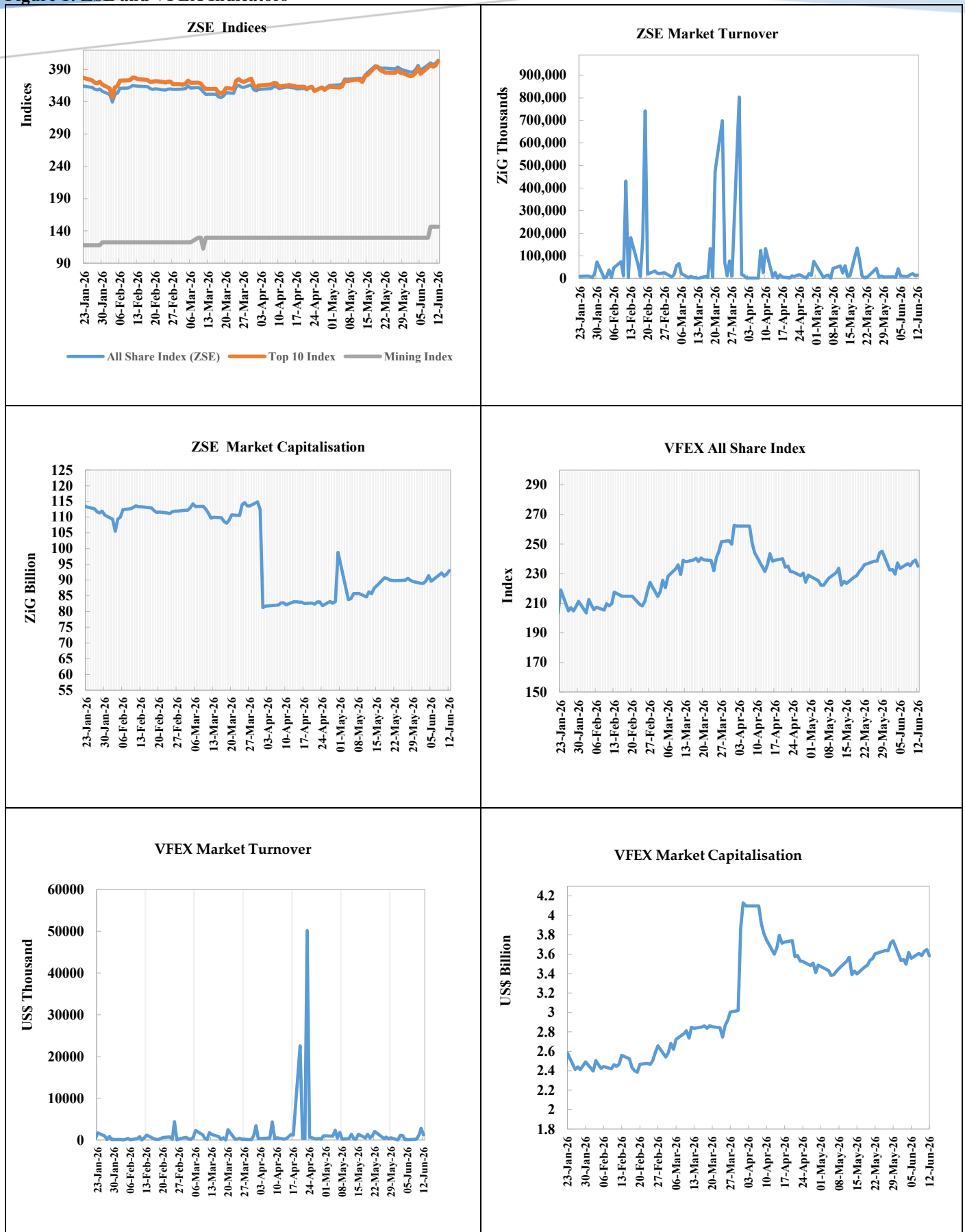
Source: Zimbabwe Stock Exchange, 2026

### VFEX Indicators

Date	All Share Index Points	Grand Market Capitalisation (US\$ billion)	Market Turnover (US\$ million)	Volume of Shares (million)
22-May 26	236.12	3.61	5.54	19.18
29-May 26	245.12	3.74	1.85	4.10
05-Jun 25	233.57	3.56	2.41	6.50
12-Jun 25	234.99	3.58	5.67	5.70
<b>Weekly Change (%)</b>	0.61	0.56	135.27	(12.31)

Source: Victoria Falls Stock Exchange, 2026

**Figure 1: ZSE and VFEX Indicators**



Source: Zimbabwe Stock Exchange and Victoria Falls Stock Exchange, 2026

#### 4. CLEARING AND SETTLEMENT ACTIVITY

PAYMENT STREAM	WEEK ENDING	WEEK ENDING	WEEKLY
	5 Jun 2026	12 Jun 2026	CHANGE (%)
	<b>VALUES</b>		
<b>RTGS</b>	43,271,091,619.41	36,686,549,876.88	(15.22)
<i>Of which ZiG</i>	16,362,256,893.16	14,237,505,090.28	(12.99)
<i>Of which US\$ transactions (ZiG Equivalent)</i>	26,908,834,726.25	22,449,044,786.60	(16.57)
<b>POS</b>	3,130,381,504.69	2,663,504,084.64	(14.91)
<b>ATM</b>	2,605,825,969.76	1,870,339,150.17	(28.22)
<b>MOBILE BANKING</b>	364,520,478.21	367,578,268.05	0.84
<b>MOBILE MONEY</b>	6,288,987,513.92	6,655,647,056.33	5.83
<b>ZIPIT MOBILE</b>	429,592,174.33	393,425,058.21	(8.42)
<b>TOTAL</b>	<b>56,090,399,260.33</b>	<b>48,637,043,494.28</b>	<b>(13.29)</b>
	<b>VOLUMES</b>		
<b>RTGS</b>	223,842	178,065	(20.45)
<i>Of which ZiG</i>	84,047	58,341	(30.59)
<i>Of which US\$</i>	139,795	119,724	(14.36)
<b>POS</b>	2,341,114	1,788,752	(23.59)
<b>ATM</b>	310,956	351,561	13.06
<b>MOBILE BANKING</b>	421,620	448,456	6.36
<b>MOBILE MONEY</b>	17,159,781	18,314,403	6.73
<b>ZIPIT MOBILE</b>	457,860	345,307	(24.58)
<b>TOTAL</b>	<b>20,915,173</b>	<b>21,426,544</b>	<b>2.44%</b>

Source: Reserve Bank of Zimbabwe, 2026

#### 5. ENERGY PRICES

##### Energy Prices

	22-May-2026	29-May-2026	5-Jun-2026	12-Jun-2026
<b>Domestic Energy Prices</b>	US\$	US\$	US\$	US\$
<b>Diesel 50/ litre</b>	2.09	2.09	2.09	2.09
<b>Petrol Blend E5/ litre</b>	2.08	2.08	2.08	2.08
<b>LP Gas / kg</b>	1.95	1.95	1.96	1.96
<b>International Energy Prices (Weekly average)</b>	US\$/barrel	US\$/barrel	US\$/barrel	US\$/barrel
<b>Crude Oil Prices (US\$/barrel)</b>	102.77	105.95	94.98	90.04

Source: Zimbabwe Energy Regulatory Authority and BBC 2026

#### 6. GOLD PM FIX, MOSI-OA-TUNYA GOLD COINS AND GOLD BACKED DIGITAL TOKENS (GBDT)

##### Gold PM Fix and Gold Backed Digital Token Prices

Date	Gold PM Fix	GBDT ZiG Price per Mg		GBDT US\$ Price per Mg	
	US\$/oz	Buy	Sell	Buy	Sell
<b>8-Jun-26</b>	4,365.15	3.57	3.95	0.1333	0.1474
<b>9-Jun-26</b>	4,320.60	3.53	3.90	0.1320	0.1459
<b>10-Jun-26</b>	4,327.65	3.54	3.91	0.1322	0.1461
<b>11-Jun-26</b>	4,170.95	3.41	3.77	0.1274	0.1408
<b>12-Jun-26</b>	4,074.85	3.33	3.68	0.1245	0.1376

Source: London Bullion Market Association and Reserve Bank of Zimbabwe, 2026

## Mosi-oa-Tunya Gold Coin Prices

Gold Coin Price	8-Jun-2026	9-Jun-2026	10-Jun-2026	11-Jun-2026	12-Jun-2026
<b>1.00Oz</b>					
US\$	4,583.41	4,536.63	4,544.03	4,379.50	4,278.59
ZiG	122,850.90	121,451.48	121,681.01	117,284.69	114,534.50
<b>0.50Oz</b>					
US\$	2,291.70	2,268.32	2,272.02	2,189.75	2,139.30
ZiG	61,425.45	60,725.74	60,840.51	58,642.35	57,267.25
<b>0.25Oz</b>					
US\$	1,145.85	1,134.16	1,136.01	1,094.87	1,069.65
ZiG	30,712.73	30,362.87	30,420.25	29,321.17	28,633.62
<b>0.10Oz</b>					
US\$	458.34	453.66	454.40	437.95	427.86
ZiG	12,285.09	12,145.15	12,168.10	11,728.47	11,453.45

Source: Reserve Bank of Zimbabwe, 2026

## 7. EXTERNAL SECTOR

### Exchange Rate Developments (ZiG per Unit of Foreign Currency)

	USD	ZAR	GBP	BWP	EURO
<b>Weekly Average (1 Jun – 5 Jun)</b>	<b>26.8518</b>	<b>1.6475</b>	<b>36.1105</b>	<b>1.9187</b>	<b>31.2209</b>
<b>8-Jun</b>	26.8034	1.6166	35.7598	1.9154	30.9138
<b>9-Jun</b>	26.7713	1.6247	35.7721	1.9106	30.9035
<b>10-Jun</b>	26.7782	1.6147	35.8374	1.9110	30.9235
<b>11-Jun</b>	26.7804	1.6192	35.8457	1.9736	31.7073
<b>12-Jun</b>	26.7804	1.6192	35.8457	1.9046	36.5340
<b>Weekly Average (8 Jun – 12 Jun)</b>	<b>26.7827</b>	<b>1.6189</b>	<b>35.8121</b>	<b>1.9230</b>	<b>32.1964</b>
<i>Appr (-)/Depr (+) (%) of the ZiG</i>	-0.26	-1.74	-0.83	+0.22	+3.12

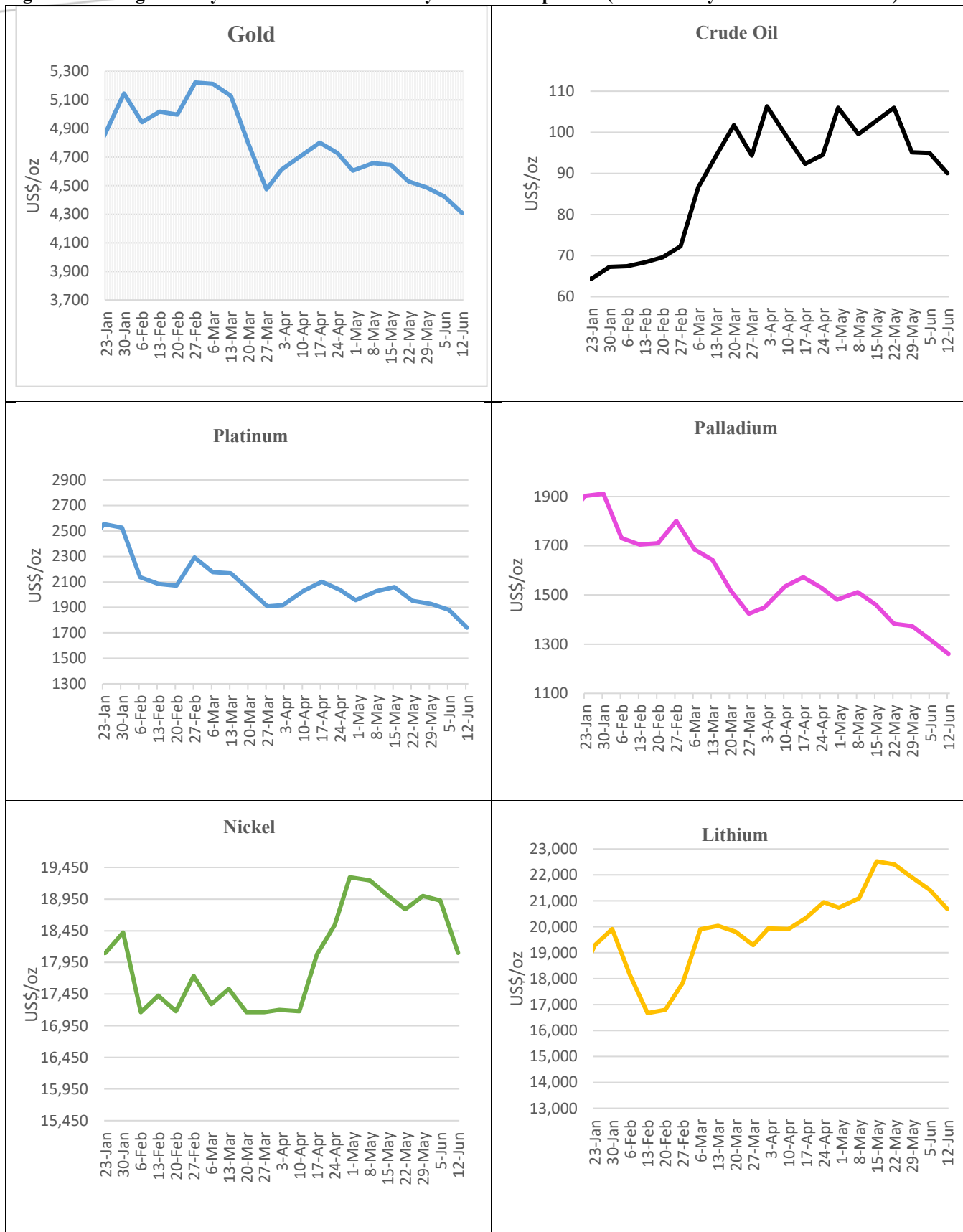
Source: Reserve Bank of Zimbabwe, 2026

### International Commodity Prices

	Gold US\$/oz	Platinum US\$/ounce	Palladium US\$/ounce	Nickel US\$/tonne	Lithium US\$/tonne
<b>Weekly Average (1 Jun – 5 Jun)</b>	<b>4,424.76</b>	<b>1,881.80</b>	<b>1,318.20</b>	<b>18,928.00</b>	<b>21,432.00</b>
<b>8-Jun</b>	4487.25	1746.00	1213.00	18581.00	20980.00
<b>9-Jun</b>	4346.20	1763.00	1227.00	18341.00	20730.00
<b>10-Jun</b>	4211.70	1682.00	1242.00	18064.00	20520.00
<b>11-Jun</b>	4177.25	1728.00	1289.00	17693.00	20550.00
<b>12-Jun</b>	4328.50	1780.00	1330.00	17830.00	20700.00
<b>Weekly Average (8 Jun – 12 Jun)</b>	<b>4310.18</b>	<b>1739.80</b>	<b>1260.20</b>	<b>18101.80</b>	<b>20696.00</b>
<i>Weekly change (%)</i>	(2.59)	(7.55)	(4.40)	(4.36)	(3.43)

Source: BBC, KITCO and Bloomberg, 2026

**Figure 3: Average Weekly International Commodity Price Developments (23<sup>rd</sup> January 2026– 12<sup>th</sup> June 2026)**



Source: BBC, KITCO and Bloomberg, 2026

## 8. TOBACCO SALES

### Weekly Cumulative Tobacco Sales: Day 69 (12<sup>th</sup> June 2026)

	2026	2025	Variance (%)
Cumulative Quantity Sold (kgs)	325,982,613	292,501,135	11.45
Average Price (US\$/kg)	2.50	3.36	(25.44)
Cumulative Value (US\$)	816,350,459	982,445,253	(16.91)

**RESERVE BANK OF ZIMBABWE  
JUNE 2026**