



MONTHLY ECONOMIC REVIEW



May 2024

TABLE OF CONTENTS

OVERVIEW	3
INTERNATIONAL COMMODITY PRICE DEVELOPMENTS	3
MONETARY DEVELOPMENTS	8
STOCK MARKET DEVELOPMENTS	9
Zimbabwe Stock Exchange (ZSE)	9
Victoria Falls Stock Exchange (VFEX)	9
NATIONAL PAYMENTS SYSTEM	10
Zimbabwe Electronic Transfer Settlement System (ZETSS)	10
Mobile and Internet Based Transactions	10
INFLATION OUTTURN	10
US\$ Inflation Developments	11
Monthly Inflation ZiG	11

OVERVIEW

During the month under review, Monthly ZiG inflation stood at -2.4% which is indicative of the positive impact of the recalibrated monetary policy measures introduced on 5th April 2024.

Broad money (M3) stock stood at ZiG41,027.61 million in May 2024, an increase of 5.86% from ZiG38,754.79 million recorded in April 2024.

On the capital markets, the Zimbabwe Stock Exchange was bullish while the Victoria Falls Stock Exchange was bearish during the month of May 2024.

The value of transactions processed through the National Payment Systems (NPS) stood at ZiG 90.04 trillion during the month of May 2024. NPS transaction volumes increased by 39% to close at 53.88 million, during the same month.

On the external front, the country's total merchandise trade for May 2024 stood at US\$1,317.2 million, reflecting a 7.51% increase, compared to the US\$1,225.2 million recorded in the previous month. The increase in total trade was attributable to increases in both imports and exports, during the reporting month.

International monthly average prices for gold, platinum, copper, nickel, and lithium firmed, while those for palladium and Brent crude oil retreated in May 2024. Prices for most commodities gained mainly on account of increased demand, geopolitical fragmentation, and market expectations regarding the US Federal Reserve's plans for interest rate cuts.

INTERNATIONAL COMMODITY PRICE DEVELOPMENTS

International monthly average prices for gold, platinum, copper, nickel, and lithium firmed, while those for palladium and Brent crude oil retreated in May 2024. Price increases for most were mainly on account of higher demand, geopolitical fragmentation, and market expectations regarding the US Federal Reserve's plans for interest rate cuts.

Table 1: International Commodity Prices for April and May 2024

Commodity		Apr-24	May-24	Monthly changes (%)
Gold	US\$/oz	2,333.14	2,349.69	0.71
Platinum	US\$/oz	941.68	1,014.22	7.70
Palladium	US\$/ounce	1,016.20	975.33	-4.02
Copper	US\$/tonne	9,592.53	10,236.52	6.71
Nickel	US\$/tonne	18,353.90	19,805.43	7.91
Brent Crude oil	US\$/barrel	88.96	83.05	-6.64
Lithium	US\$/tonne	13,703.00	14,218.70	3.76

Source: Bloomberg, 2024

Gold

Gold prices rose by 0.7%, from US\$2,333.14 per ounce in the previous month to US\$2,349.69 per ounce, during the month under review. Prices were supported by safe-haven demand as geopolitical uncertainty persists.

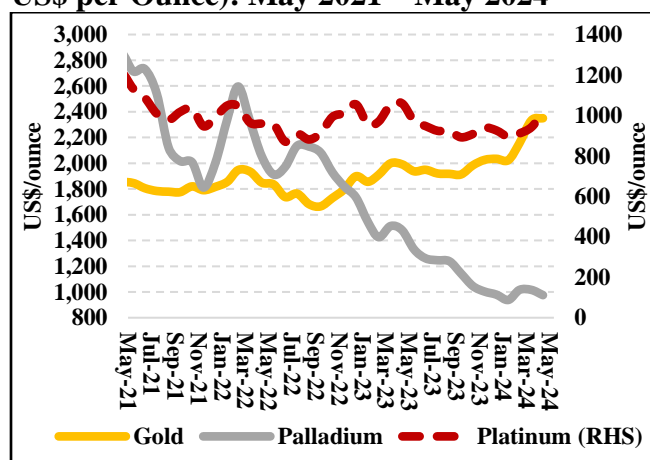
Platinum

Platinum prices increased by 7.7%, from an average of US\$941.68 per ounce in the previous month to US\$1,014.22 per ounce, during the reporting month. This was mainly on account of higher demand for the precious metal.

Palladium

During the reporting month, palladium prices slumped by 4% to US\$975.33 per ounce from US\$1,016.08 per ounce recorded in April 2024. This was due to the auto-industry's continued relative preference for the more affordable platinum based catalytic converters and hence decreasing demand for palladium. The price trends of precious metals for the period from April 2021 to May 2024 are shown in Figure 1.

Figure 1: Monthly Precious Metal Prices (in US\$ per Ounce): May 2021 – May 2024

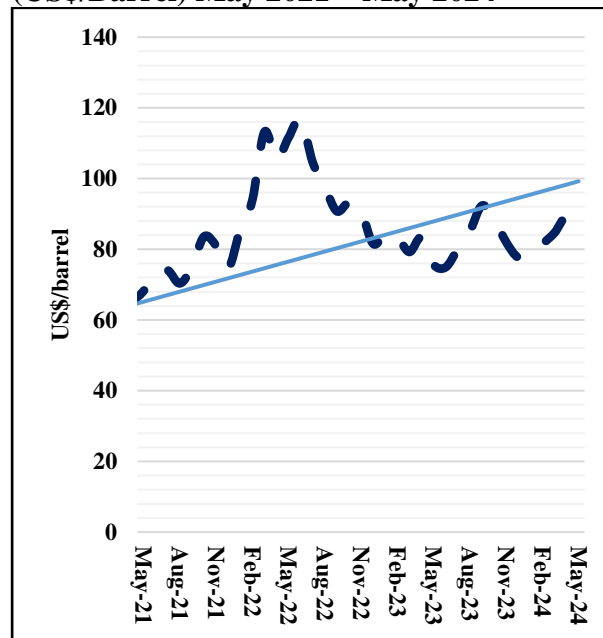


Source: Bloomberg, 2024

Brent Crude Oil

During the month of May 2024, Brent crude oil prices declined by 6.6%, from an average of US\$88.96 per barrel in April 2024 to US\$83.05 per barrel. Prices decreased mainly on account of investor anticipation of the US Federal Reserve's intentions of further tightening interest rates, aimed at sustaining current inflation levels. Figure 2 shows developments in oil prices for the period from May 2021 to May 2024.

Figure 2: Brent Crude Oil Prices (US\$/Barrel) May 2021 – May 2024



Source: Bloomberg, 2024

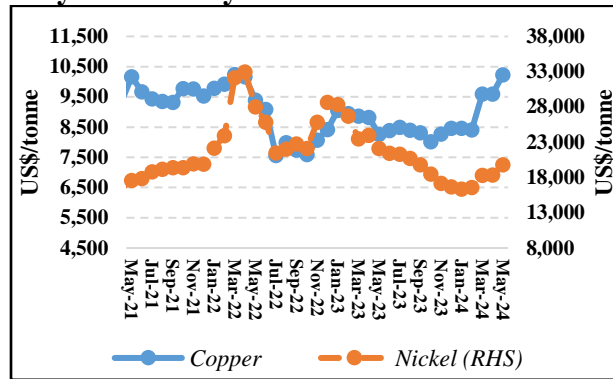
Copper

The red metal's monthly average price rose by 6.7%, from US\$9,592.53 per tonne recorded in the prior month to US\$10,236.52 per tonne, during the month under analysis. The price increase was mainly due to subdued supply concerns amid high global demand.

Nickel

The price of nickel increased by 7.9%, from an average of US\$18,353.90 per tonne in April 2024 to US\$19,805.43 per tonne, during the month under review. This was mainly driven by political unrest in New Caledonia, which holds 10% of the world's nickel reserves, and supply restrictions from Russia. Figure 3 shows base metals price developments for the period from May 2021 to May 2024.

Figure 3: Base Metal Prices (US\$/tonne): May 2021 – May 2024

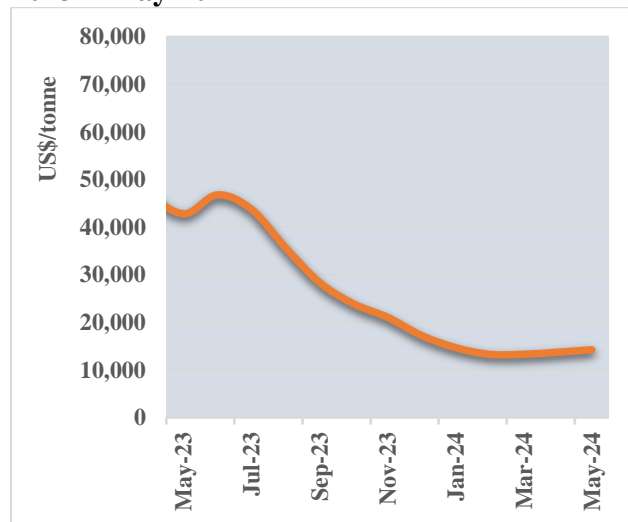


Source: Bloomberg 2024

Lithium

Lithium prices rose by 3.8%, from US\$13,703.00 per tonne in April 2024 to US\$14,218.70 per tonne, during the reporting month. This followed an improvement in the demand for the metal. The price developments for lithium for the period from May 2023 to May 2024 are illustrated in Figure 4.

Figure 4: Lithium Prices (US\$/tonne) May 2023 – May 2024



Source: London Metal Exchange, 2024

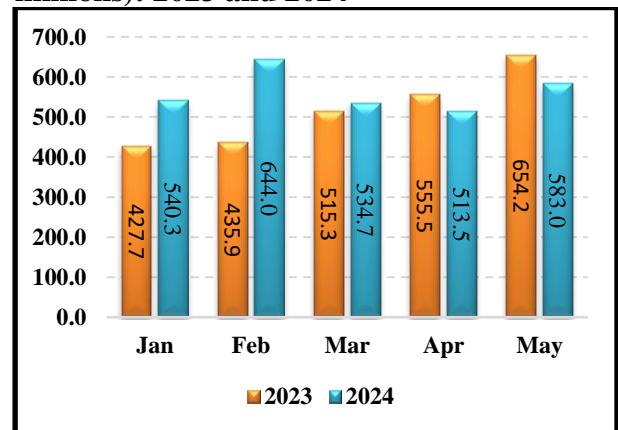
Merchandise Trade Developments

The country's total merchandise trade for May 2024 stood at US\$1,317.2 million, 7.51% higher, compared to the US\$1,225.2 million recorded in the previous month. The increase in total trade was attributable to increases in both imports and exports, during the reporting month. On a year-on-year basis, total merchandise trade receded by about 14.2%, from US\$1,504.6 million recorded in the corresponding month in 2023.

Merchandise Exports

During the month of May 2024, the country exported merchandise worth US\$583.0 million representing an increase of 13.5%, from US\$513.5 million recorded in the previous month. The increase in merchandise exports was largely driven by increased gold exports. The exports for the month under analysis were, however, 10.9% lower than the US\$654.2 million recorded in the corresponding month in 2023. Figure 5 shows developments in the country's merchandise exports for the period from January 2023 to May 2024.

Figure 5: Merchandise Exports (US\$ millions): 2023 and 2024



Source: ZIMSTAT, 2024

Exports by Commodity

The country's leading export commodities were gold, PGMs, other ores and concentrates, and other mineral substances, accounting for 42.5%, 21.6%, 6.7%, and 5.8% of the export basket, respectively.

Table 2 shows developments in the country's exports for the months of April and May 2024.

Table 2: Major Exports (US\$ millions)

	Apr-24 (US\$m)	May-24 (US\$m)	Apr-May Changes (%)	Share of Exports (%) May-24
Total	513.5	583.0	13.5	100.0
<i>Of Which:</i>				
<i>Gold</i>	107.1	247.5	131.1	42.5
<i>PGMs*</i>	213.6	125.7	-41.2	21.6
<i>Other ores and concentrates</i>	36.3	38.9	7.2	6.7
<i>Other mineral substance</i>	31.5	33.8	7.3	5.8
<i>Tobacco (including cigarettes)</i>	33.7	30.2	-10.4	5.2
<i>Ferro-chromium</i>	28.0	23.3	-16.8	4.0
<i>Industrial diamonds</i>	3.4	19.9	485.3	3.4
<i>Chromium ores and concentrates</i>	14.1	16.2	14.9	2.8
<i>Coal</i>	17.8	11.8	-33.7	2.0
<i>Electricity</i>	1.2	2.1	75.0	0.4
<i>Others</i>	26.9	33.5	24.5	5.7

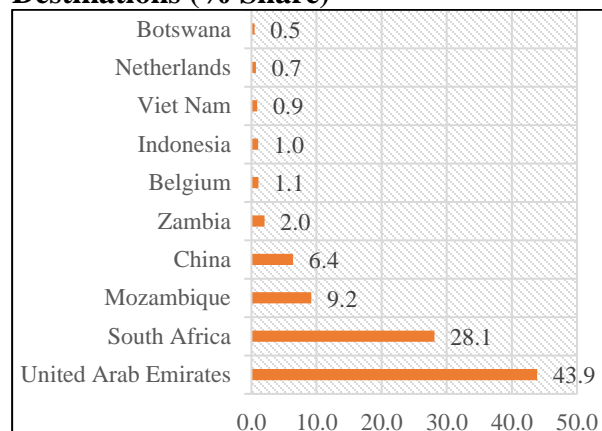
Source: ZIMSTAT & RBZ Calculations, 2024

*PGMs Include Nickel mattes, nickel ores & concentrates and platinum

Export Markets

During the month under analysis, the country's exports were mainly destined for the United Arab Emirates (43.9%), South Africa (28.1%), Mozambique (9.2%), China (6.4%) and other jurisdictions. Figure 6 shows the country's major export markets during the reporting month.

Figure 6: Top Ten Merchandise Export Destinations (% Share)

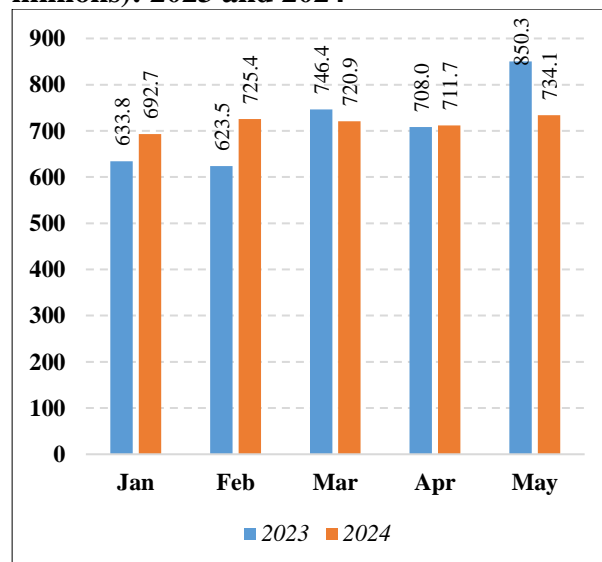


Source: ZIMSTAT & RBZ Calculations, 2024

Merchandise Imports

The country's import bill for May 2024 amounted to US\$734.1 million, reflecting a 3.2% increase from US\$711.7 million reported in the previous month. Similarly, the reporting month's imports were lower than the US\$850.40 million recorded in the comparable month in 2023, as shown in Figure 7.

Figure 7: Merchandise Imports (US\$ millions): 2023 and 2024



Source: ZIMSTAT & RBZ Computations, 2024

Imports by Commodity

During the month of May 2024, the country's import basket was largely composed of diesel, leaded petrol, maize and rice, accounting for 12.7%, 6.2%, 5.4% and 2.8% of total imports, respectively. Table 3 shows imports of major commodities for April and May 2024.

Table 3: Major Imports (US\$ millions)

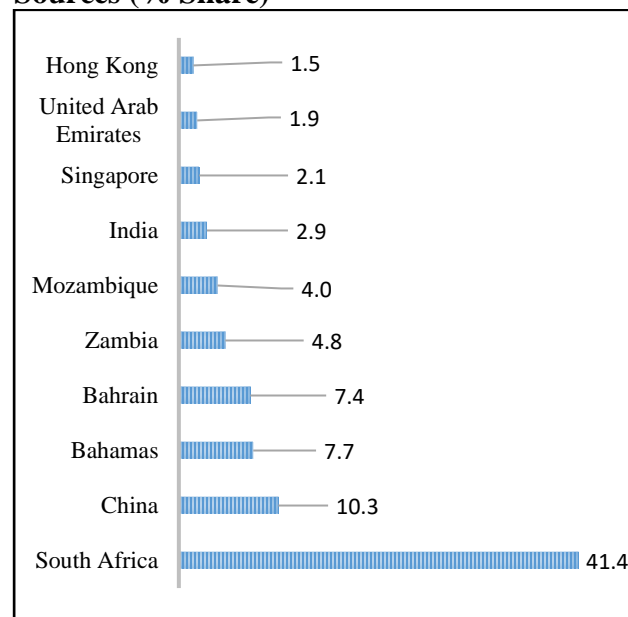
	Apr-24 (US\$ m)	May-24 (US\$ m)	Apr - May Changes (%)	Share of Total Imports (%) May-24
Total	711.7	734.1	3.1	100.0
<i>Of Which:</i>				
<i>Diesel</i>	66.2	93.1	40.6	12.7
<i>Petrol</i>	37.3	45.4	21.7	6.2
<i>Maize</i>	38.6	39.8	3.1	5.4
<i>Rice</i>	25.4	20.2	-20.5	2.8
<i>Crude soya bean oil</i>	16.4	16.7	1.8	2.3
<i>Electricity</i>	11.2	16.4	46.4	2.2
<i>Butanes, Liquefied</i>	7.9	8.5	7.6	1.2
<i>Kerosene-type jet fuel</i>	7.5	7.8	4.0	1.1
<i>Lubricating oils</i>	9.9	5.9	-40.4	0.8
<i>Flavouring for drinks (Oderifer)</i>	2.9	5.8	100.0	0.7
Others	489.8	479.2	-2.2	65.3

Source: ZIMSTAT & RBZ Calculations, 2024

Source Markets

The top ten import sources accounted for approximately 84% of total imports. The country primarily imported from South Africa, contributing about 41.4% of total imports, followed by China, 10%, the Bahamas, 7.7%, and Bahrain, 7.4%. Figure 4 shows the country's top import sources in May 2024.

Figure 8: Top Ten Merchandise Import Sources (% Share)

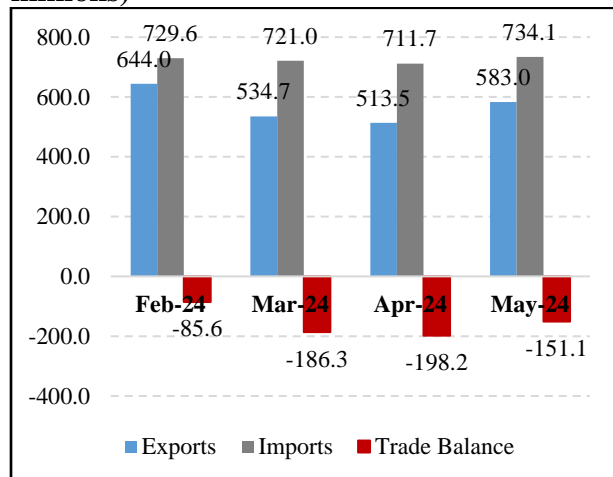


Source: ZIMSTAT & RBZ Calculations, 2024

Merchandise Trade Balance

During the month under review, the country's trade deficit stood at US\$151.1 million, which was 23.7% lower than the US\$198.2 million, recorded in the previous month. Relative to the comparative month in 2023, the country's deficit narrowed by 22.9%, from US\$196.1 million to US\$151.1 million. Figure 9 shows the country's trade balance for the month of May 2024.

Figure 9: Merchandise Trade Balance (US\$ millions)



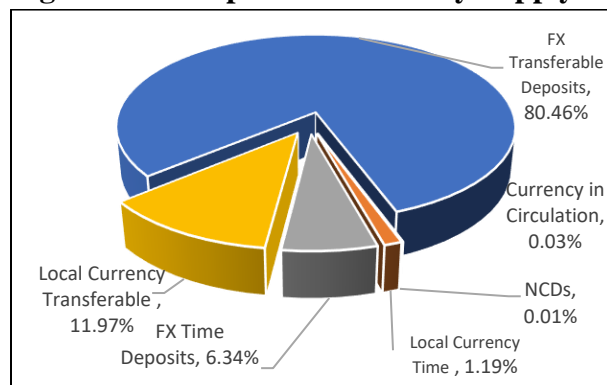
Source: ZIMSTAT & RBZ Computations, 2024

MONETARY DEVELOPMENTS¹

Broad money (M3) stock stood at ZiG41,027.61 million in May 2024, an increase of 5.86% from ZiG38,754.79 million recorded in April 2024.

The money stock comprised foreign currency deposits, 86.80%; local currency deposits, 13.16%; and local currency in circulation, 0.03%.

Figure 10: Composition of Money Supply



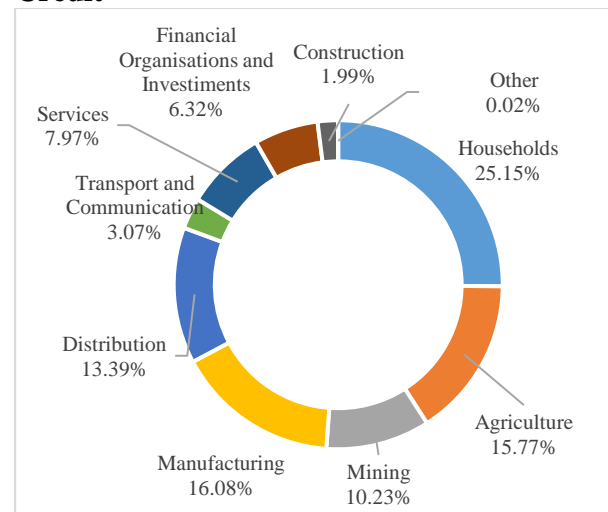
Source: Reserve Bank of Zimbabwe, 2024

During the month under review, domestic credit increased by 6.08% to ZiG37,674.71 million, from ZiG35,515.68 million in April 2024. The expansion in domestic credit largely reflected increases in net claims on Government by ZiG1,057.28 million, to ZiG11,278.38 million; and credit to the private sector by ZiG1,041.61 million to ZiG25,023.65 million.

Outstanding credit to the private sector was mainly channeled to households, manufacturing, agriculture, and distribution, which received 25.15%, 16.08%, 15.77%, and 13.39% of the total credit, respectively. The mining sector received 10.23% of the total outstanding credit.

Private sector credit shares for the rest of the economic sectors are shown in Figure 11.

Figure 11: Distribution of Private Sector Credit



Source: Reserve Bank of Zimbabwe, 2024

¹ All monetary numbers are valued in ZiG since the introduction of the new currency in April 2024.

Credit to the private sector was largely utilized for recurrent expenditures, 39.71%; inventory build-up, 23.40%; and fixed capital investments, 15.93%.

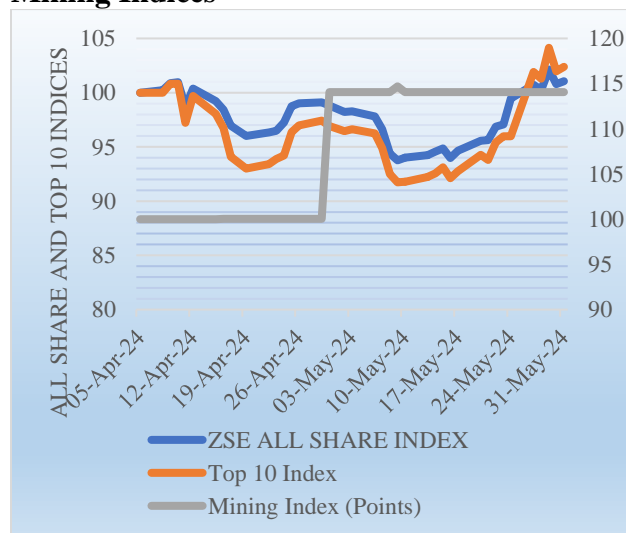
STOCK MARKET DEVELOPMENTS

Zimbabwe Stock Exchange (ZSE)

During the month of May 2024, trading on the Zimbabwe Stock Exchange (ZSE) was bullish. As a result, the All Share, Top 10 and Top 15 indices increased by 2.27%, 5.64% and 4.19% to close at 101.07 points, 102.39 points and 102.17 points, respectively.

The resource index, however, remained unchanged at 114.07 points during the same period.

Figure 12: ZSE All Share, Top 10 and Mining Indices



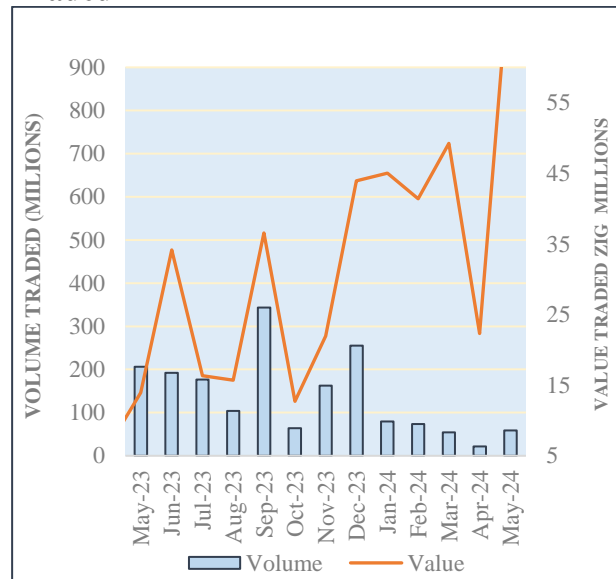
Source: Zimbabwe Stock Exchange, 2024

During the month under review, the cumulative volume and value of shares traded increased by 168.10% and 240.34% to 58.83 million shares and ZiG75.91 million, respectively.

The proportion of foreign purchases to the value of shares traded stood at 1.60% in May 2024, from 130.74% in April 2024.

Net foreign position improved from a negative position of ZiG125.84 million in April 2024 to a negative ZiG20.74 million in May 2024.

Figure 13: ZSE Monthly Volume and Value Traded



Source: Zimbabwe Stock Exchange, 2024

Market capitalization gained 2.88%, or ZiG823.88 million worth of capitalization to close at ZiG29.39 billion during the month under analysis.

On a year-on-year basis, the market capitalization increased by 721.67%, from ZiG3.58 billion recorded in May 2023.

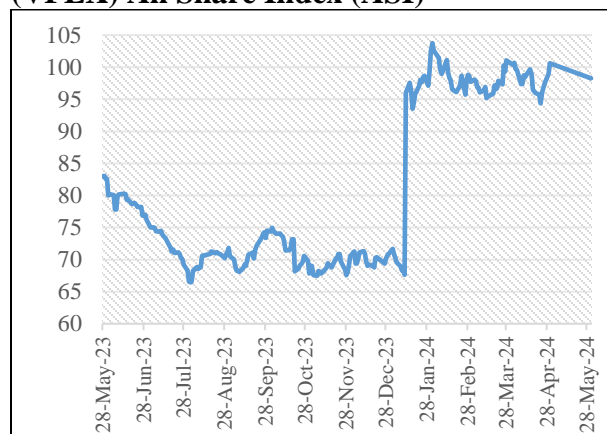
Victoria Falls Stock Exchange (VFEX)

During the month under review, the Victoria Falls Stock Exchange (VFEX) experienced bearish sentiments. As such, the VFEX All Share index lost 2.35% to close at 98.26 points,

compared to 100.62 points recorded in April 2024.

On an annual basis, the VFEX All Share index increased by 18.92% from 82.62 points recorded in May 2023.

Figure 14: Victoria Falls Stock Exchange (VFEX) All Share Index (ASI)

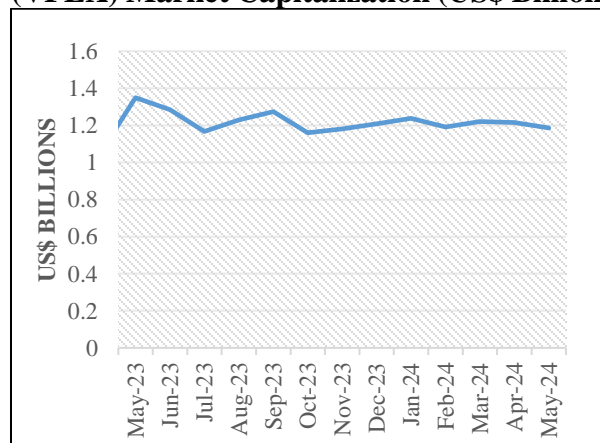


Source: Victoria Falls Stock Exchange, 2024

VFEX Market Capitalization

Owing to slow trading activity on the VFEX, market capitalization declined by 2.35% to US\$1.19 billion, compared to US\$1.22 billion recorded in the previous month.

Figure 15: Victoria Falls Stock Exchange (VFEX) Market Capitalization (US\$ Billion)



Source: Victoria Falls Stock Exchange (VFEX), 2024

NATIONAL PAYMENTS SYSTEM

The value of transactions processed through the National Payment Systems (NPS) increased by 34% to ZiG90.04 billion from ZiG66.94 billion recorded in April 2024. NPS volumes increased by 39% to 53.88 million from 38.65 million recorded in the previous month.

Zimbabwe Electronic Transfer Settlement System (ZETSS)

The value of transactions processed through the Real Time Gross Settlement (RTGS) system increased by 30% to ZiG53.74 billion in May 2024 from ZiG41.32 billion in April 2024.

The volume of RTGS transactions increased by 32% from 792 thousand in the previous month to close at 1.05 million during the month under analysis.

Mobile and Internet Based Transactions

Mobile and internet-based transactions amounted to ZiG29.61 billion in May 2024 from ZiG20.75 billion in April 2024.

Cash Transactions

Cash based transactions amounted to ZiG7.94 billion from ZiG9.28 billion in April 2024.

Card Based Transactions

Card based transactions amounted to ZiG6.69 billion during the month under review, from ZiG4.86 billion in April 2024.

INFLATION OUTTURN

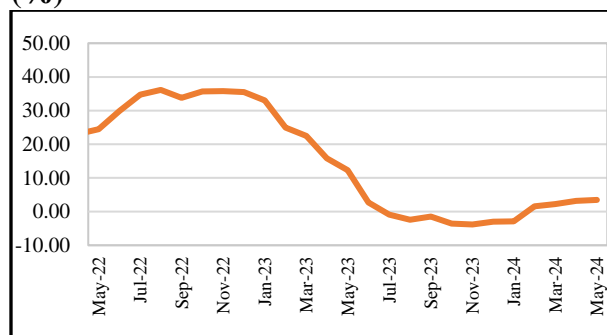
During the month under analysis, both the ZiG and weighted measures of monthly inflation were in the negative territory in May 2024,

indicative of the positive impact the currency reforms implemented in April 2024, had on pricing.

US\$ Inflation Developments

Annual inflation rate accelerated to 3.5% in May 2024, from 3.20% in the previous month.

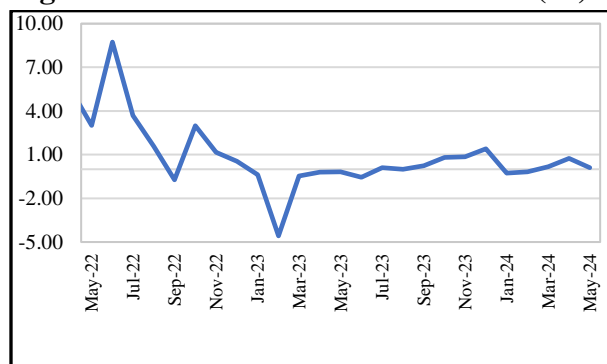
Figure 16: Annual Inflation Developments (%)



Source: ZIMSTAT, 2024

Figure 18 shows developments in monthly US\$ inflation from May 2022 to May 2024.

Figure 17: Month-on-Month Inflation (%)



Source: ZIMSTAT, 2024

Monthly Inflation ZiG

The month-on-month ZiG inflation rate for May 2024 stood at -2.4%, while the US\$ monthly inflation stood at 0.1%. Resultantly, the monthly weighted inflation rate for May 2024 was 0.6%.

JUNE 2024

RESERVE BANK OF ZIMBABWE

Statistical Tables

Monetary Statistics

1. Depository Corporations Survey	14
2. Central Bank Survey	15
3. Other Depository Corporations Survey	16

Other Depository Corporations

4.1 Assets	17
4.2 Liabilities	18

Commercial Banks

5.1 Assets	19
5.2 Liabilities	20

Building Societies

6.1 Assets	21
6.2 Liabilities	22

Sectoral Analysis of Bank Loans and Advances and Deposits

7.1 Sectoral Analysis of Commercial Banks Loans and Advances	23
7.2 Sectoral Analysis of Commercial Banks Deposits	24

Interest Rates

8.1 Lending Rates	25
8.2 Banks Deposit Rates	26

Inflation

9.1 Monthly Inflation	27
9.2 Yearly Inflation	28

External Statistics

10. Exchange Rates	29
--------------------	----

Zimbabwe Stock Exchange

11. Zimbabwe Stock Market Statistics	30
--------------------------------------	----

National Payments System Statistics

12.1 Values of Transactions 31

12.2 Volumes of Transactions 32

Trade Statistics

13. Merchandise Trade Statistics 33

TABLE 1: DEPOSITORY CORPORATIONS SURVEY (\$ '000)

	Jun-23	Jul-23	Aug-23	Sep-23	Oct-23	Nov-23	Dec-23	Jan-24	Feb-24	Mar-24		*Apr-24	*May-24
Net Foreign Assets	-16,963,911,301.47	-14,214,106,707.82	-14,227,506,302.78	-16,447,478,675.26	-17,460,266,333.79	-18,045,044,675.98	-18,830,050,198.23	-30,708,633,279.93	-45,596,903,934.05	-66,258,169,977.30		-28,856,803.24	-27,777,119.25
Central Bank(net)	-20,831,187,742.72	-17,851,691,225.27	-17,684,416,714.28	-20,303,911,826.15	-21,115,539,152.06	-21,850,985,894.27	-22,724,299,913.18	-37,204,315,094.00	-54,031,060,405.32	-77,865,030,279.36		-35,698,765.79	-34,641,175.73
Foreign Assets	4,938,308,098.53	2,249,211,942.26	2,357,413,332.73	2,869,139,839.85	2,930,487,891.77	2,722,752,920.94	2,750,142,276.55	4,789,971,270.20	7,165,906,234.24	12,179,330,672.54		9,276,276.05	9,502,376.00
Foreign Liabilities	25,769,495,841.25	20,100,903,167.53	20,041,830,047.01	23,173,051,666.00	24,046,027,043.83	24,573,738,815.21	25,474,442,189.73	41,994,286,364.20	61,196,966,639.56	90,044,360,951.90		44,975,041.84	44,143,551.73
Other Depository Corporations(net)	3,867,276,441.25	3,637,584,517.45	3,456,910,411.50	3,856,433,150.89	3,655,272,818.27	3,805,941,218.28	3,894,249,714.95	6,495,681,814.07	8,434,156,471.26	11,606,860,302.06		6,841,962.55	6,864,056.48
Foreign Assets	5,707,374,025.18	5,099,940,234.73	4,942,678,600.40	5,547,113,224.93	5,232,466,845.31	5,592,082,221.64	5,729,082,981.88	9,507,866,394.28	12,860,635,148.65	18,155,224,099.23		10,973,836.76	11,293,656.76
Foreign Liabilities	1,840,097,583.93	1,462,355,717.28	1,485,768,188.90	1,690,680,074.03	1,577,194,027.04	1,786,141,003.36	1,834,833,266.93	3,012,184,580.21	4,426,478,677.39	6,548,363,797.17		4,131,874.21	4,429,600.28
Net Domestic Assets (NDA)	31,239,386,362.79	27,217,558,926.15	27,639,288,378.08	32,161,547,467.69	34,250,554,903.24	35,673,225,646.05	37,744,636,990.28	59,956,750,588.31	86,209,941,031.87	125,429,655,454.08		67,611,589.07	68,804,734.10
Domestic Claims	10,642,561,243.15	11,094,734,236.77	11,015,584,365.69	13,148,134,761.58	14,099,323,168.68	14,764,938,049.74	16,661,349,824.12	26,555,487,015.34	39,630,053,424.85	58,052,804,317.53		35,515,681.43	37,674,708.61
Claims on Central Government(net)	-464,905,858.96	1,919,403,373.96	2,035,378,139.93	2,469,546,156.09	2,685,249,888.61	3,426,568,722.64	4,633,764,250.89	8,146,919,528.13	12,506,419,694.13	16,182,769,560.45		10,221,096.31	11,278,377.99
Claims on Central Government	3,237,920,191.20	3,137,951,747.03	3,471,122,173.32	3,948,824,640.88	4,022,430,300.76	4,506,540,165.69	5,826,109,037.18	9,899,880,742.54	14,706,600,268.21	22,087,558,829.62		12,982,655.95	13,103,602.41
Central Bank	2,246,012,881.84	1,888,538,492.52	2,273,053,198.66	2,620,306,139.59	2,738,773,804.86	2,978,270,299.68	3,186,271,122.40	5,598,206,535.08	8,298,885,386.12	13,434,742,848.85		7,155,621.00	7,206,353.91
ODCs	991,907,309.36	1,249,413,254.51	1,198,068,974.66	1,328,518,501.28	1,283,656,495.90	1,528,269,866.01	2,639,837,914.78	4,301,674,207.46	6,407,714,882.09	8,652,815,980.77		5,827,034.95	5,897,338.50
Less Liabilities to Central Government	3,702,826,050.16	1,218,548,373.07	1,435,744,033.39	1,479,278,484.78	1,337,180,412.15	1,079,971,443.04	1,192,344,786.29	1,752,961,214.41	2,200,180,574.08	5,904,789,269.17		2,761,559.64	1,825,314.42
Central Bank	3,270,215,884.09	838,112,561.24	1,054,218,531.34	1,364,775,878.32	1,190,127,107.91	946,496,075.59	990,859,913.99	1,583,331,636.98	1,859,602,799.84	5,389,222,254.62		2,518,704.99	1,475,345.63
ODCs	432,610,166.07	380,435,811.82	381,525,502.04	114,502,606.47	147,053,304.24	133,475,367.46	201,484,872.29	169,629,577.43	340,577,774.24	515,567,014.55		242,854.65	349,968.79
Claims on Other Sectors	11,107,467,102.11	9,175,330,862.81	8,980,206,225.76	10,678,588,605.49	11,414,073,280.07	11,338,369,327.09	12,027,585,573.22	18,408,567,487.20	27,123,633,730.72	41,870,034,757.08		25,294,585.12	26,396,330.62
Other Financial Corporations	372,829,596.47	286,485,380.68	286,556,911.67	345,395,684.06	402,497,102.41	366,785,937.06	210,979,095.28	367,132,374.31	461,955,002.81	803,485,078.36		327,451.01	405,012.85
State and Local Government	83,001.69	68,073.17	75,802.84	92,048.54	98,056.56	59,769.23	73,453.85	198,797.86	232,003.28	143,347.81		1,803.44	1,371.69
Public Non Financial Corporations	1,426,648,513.58	1,144,767,740.03	942,115,955.79	1,064,377,138.00	1,124,773,262.90	758,994,509.56	779,253,503.92	787,050,316.56	1,149,678,230.61	1,615,646,416.58		983,290.25	966,293.32
Private Sector	9,307,905,990.36	7,744,009,668.94	7,751,457,555.47	9,268,723,734.89	9,886,704,858.20	10,212,529,111.24	11,037,279,520.17	17,254,185,998.48	25,511,768,494.02	39,450,759,914.33		23,982,040.42	25,023,652.76
Central Bank	23,430,389.25	42,772,151.02	61,406,600.26	79,455,077.51	92,261,985.53	97,474,935.67	102,273,703.78	144,071,607.24	211,425,087.76	325,816,652.62		148,908.53	153,636.33
ODCs	9,284,475,601.11	7,701,237,517.92	7,690,050,955.21	9,189,268,657.38	9,794,442,872.67	10,115,054,175.57	10,935,005,816.39	17,110,114,391.24	25,300,343,406.26	39,124,943,261.71		23,833,131.89	24,870,016.43
Other Items(Net)	-20,596,825,119.64	-16,122,824,689.39	-16,623,704,012.39	-19,013,412,706.11	-20,151,231,734.56	-20,908,287,596.32	-21,083,287,166.17	-33,401,263,572.98	-46,579,887,607.02	-67,376,851,136.55		-32,095,907.64	-48,116,393.84
Shares and Other Equity	-19,402,711,215.33	-14,321,122,638.86	-14,203,729,090.13	-16,555,368,520.87	-17,032,283,456.63	-17,122,059,892.58	-17,570,066,671.33	-29,549,325,579.05	-43,302,266,345.67	-60,601,283,933.04		-30,585,321.84	-170,501.60
Liabilities to Other Financial Corporations	64,321,874.21	58,256,168.71	56,751,608.46	90,032,397.59	83,441,760.88	89,997,662.25	138,722,557.11	182,726,965.66	279,727,919.49	361,061,719.66		222,678.57	150.24
Restricted Deposits	929,649,277.24	832,146,281.94	481,313,635.70	652,311,438.83	616,319,027.72	598,451,618.98	634,635,960.65	1,122,721,876.21	2,182,139,254.83	1,707,978,424.98		1,197,298.85	1,441.12
Deposits and Securities Excluded from Base Money	0.00	0.00	0.00	0.00	0.00	0.00	0.00	0.00	0.00	0.00		0.00	0.00
Other Items(net)	-2,188,085,055.76	-2,692,104,501.18	-2,958,040,166.42	-3,200,388,021.66	-3,818,709,066.54	-4,474,676,984.97	-4,286,579,012.59	-5,157,386,835.80	-5,739,488,435.67	-8,844,607,348.16		-2,930,563.22	-47,947,483.60
									0.86	0.87			
Broad Money-M3	14,275,475,061.32	13,003,452,218.33	13,411,782,075.30	15,714,068,792.44	16,790,288,569.45	17,628,180,970.07	18,914,586,792.05	29,248,117,308.38	40,613,037,097.82	59,171,485,476.79		38,754,785.83	41,027,614.86
Securities Other than Shares Included in Broad Money	4,243,581.90	2,137,443.55	3,182,683.74	2,685,488.92	3,497,226.23	4,173,191.32	42,811,406.21	7,317,942.35	9,458,363.45	6,990,856.69		2,795.45	4,372.61
Broad Money-M2	14,271,231,479.42	13,001,314,774.78	13,408,599,391.56	15,711,383,303.52	16,786,791,343.22	17,624,007,778.75	18,871,775,385.85	29,240,799,366.03	40,603,578,734.36	59,164,494,620.10		38,751,990.38	41,023,242.25
Other Deposits (Time Deposits)	1,066,573,312.15	824,657,970.63	860,202,048.80	945,509,710.97	1,187,384,045.43	1,239,087,789.32	1,287,203,962.67	1,749,790,464.18	2,805,565,709.39	4,455,813,258.53		2,705,479.15	3,276,458.32
of which Foreign Currency Accounts	852,167,654.54	616,409,108.42	586,082,872.02	715,202,149.51	865,876,028.52	823,225,160.91	878,430,928.79	1,378,784,627.54	2,089,992,436.79	3,750,078,066.25		2,426,638.27	2,953,225.13
Narrow Money-M1	13,204,658,167.27	12,176,656,804.16	12,548,397,342.75	14,765,873,592.55	15,599,407,297.79	16,384,919,989.43	17,584,571,423.18	27,491,008,901.84	37,798,013,024.97	54,708,681,361.76		36,046,511.23	37,746,783.93
Transferable Deposits	13,196,303,401.12	12,166,873,421.72	12,538,725,239.63	14,755,523,314.82	15,588,193,442.31	16,373,116,452.32	17,572,220,001.14	27,476,970,003.22	37,782,959,103.37	54,692,210,233.09		36,036,209.11	37,708,555.23
Of which Foreign Currency Accounts	11,635,488,089.25	10,099,330,132.00	10,173,498,286.11	12,310,342,777.52	12,429,076,347.34	12,757,305,066.07	13,397,781,145.35	22,901,496,643.22	32,969,005,356.37	47,611,823,202.81		29,423,827.38	30,036,317.64
Currency Outside Depository Corporations	8,354,766.15	9,783,382.43	9,672,103.13	10,350,277.73	11,213,855.47	11,803,537.12	12,351,422.04	14,038,898.63	15,053,921.60	16,471,128.68		10,302.12	38,228.70
Memorandum Items													
Reserve Money	1,064,898,441.01	1,003,043,754.90	1,062,092,590.09	1,312,407,291.74	1,787,437,296.87	1,817,508,312.01	2,021,215,296.65	3,069,128,065.16	4,054,140,062.89	6,141,481,651.19		4,892,122.31	6,639,450.71
FCAs as a Percentage of Deposits in M3	87.5%	77.7%	75.9%	78.4%	74.1%	72.4%	70.9%	78.3%	81.2%	81.0%		75.43	732.78
End Period Exchange Rate	5,739.80	4,516.80	4,608.11	5,466.75	5,698.96	5,791.08	6,104.72	10,152.39	14,912.83	22,055.47		13,430.10	13,317.70

Source: Reserve Bank of Zimbabwe, 2024

Notes:

- (i) Depository corporations survey - formerly Monetary Survey.
- (ii) Broad money redefined using IMF's Monetary and Financial Statistics Manual of 2000. Major changes include exclusion of Government deposits held by banks from broad money.
- (iii) Transferable deposits made up of demand and savings deposits.
- (iv) NCDs are also referred to as securities included in broad money.
- (v) All classes of time deposits, short and long term are classified as time deposits, which are also termed other deposits.
- (vi) Credit to the private sector now excludes claims on other financial corporations, as well as claims on state and local government (local authorities)
- (vii) Depository corporations made up of the Central Bank and other depository corporations
- (viii) Other depository corporations (ODCs) - Commercial banks, merchant banks, building societies and POSB.
- (ix) In December 2017, the statistics were adjusted in retrospect by reclassifying Securities issued under Afrades from claims on government to claims on central bank
- (x) In December 2017, the statistics were adjusted in retrospect by reclassifying amounts accessed by banks under the Afrades from liabilities to Other Depository corporations and Other Financial Corporations to liabilities to Central Bank
- (xi) In December 2018, statistics were revised from November 2017 due to reclassification of lines of credit (foreign liabilities) that were initially classified as deposits included in broad money
- (xii) All monetary and financial statistics are valued in ZWL\$ since the introduction of the interbank foreign exchange market in February 2019

*Statistics are denominated in ZIG

TABLE 2: CENTRAL BANK SURVEY (\$'000)

	Jun-23	Jul-23	Aug-23	Sep-23	Oct-23	Nov-23	Dec-23	Jan-24	Feb-24	Mar-24		*Apr-24	*May-24
Net Foreign Assets	-20,831,187,742.72	-17,851,691,225.27	-17,684,416,714.28	-20,303,911,826.15	-21,115,539,152.06	-21,850,985,894.27	-22,724,299,913.18	-37,204,315,094.00	-54,031,060,405.32	-77,865,030,279.36		-35,698,765.79	-34,641,175.73
Claims on Non Residents	4,938,308,098.53	2,249,211,942.26	2,357,413,332.73	2,869,139,839.85	2,930,487,891.77	2,722,752,920.94	2,750,142,276.55	4,789,971,270.20	7,165,906,234.24	12,179,330,672.54		9,276,276.05	9,502,376.00
Official Reserves Assets	2,685,528,792.05	501,097,650.65	609,700,872.98	873,028,937.84	901,998,462.96	664,790,048.98	670,897,605.40	1,283,063,711.48	1,440,292,080.05	2,707,777,264.85		3,630,141.09	4,432,806.91
Other Foreign Assets	2,252,779,306.49	1,748,114,291.61	1,747,712,459.75	1,996,110,902.01	2,028,489,428.81	2,057,962,871.96	2,079,244,671.16	3,506,907,558.71	5,725,614,154.20	9,471,553,407.69		5,646,134.96	5,069,569.09
Less Liabilities to Non Residents	25,769,495,841.25	20,100,903,167.53	20,041,830,047.01	23,173,051,666.00	24,064,027,043.83	24,573,738,815.21	25,474,442,189.73	41,994,286,364.20	61,196,906,639.56	90,044,360,951.90		44,975,041.84	44,143,551.73
Short Term Liabilities	740,090,616.66	489,297,027.10	431,377,013.98	412,442,545.53	498,435,076.07	417,352,772.09	253,445,372.66	330,761,013.21	347,930,957.96	890,130,623.01		181,911.80	69,004.62
Other Foreign Liabilities*	25,029,405,224.59	19,611,606,140.43	19,610,453,033.03	22,760,609,120.47	23,547,591,967.77	24,156,386,043.12	25,220,996,817.07	41,663,525,350.99	60,849,035,681.60	89,154,230,328.89		44,793,130.04	44,074,547.11
of which blocked funds	4,846,720,895.68	3,809,201,616.00	3,638,215,070.80	4,306,782,215.73	4,458,649,260.58	4,527,891,788.72	4,848,587,011.60	8,054,627,951.76	11,781,589,928.45	17,401,899,562.68		10,572,458.80	10,463,756.31
Net Domestic Assets (NDA)	21,896,086,183.73	18,854,734,980.17	18,746,509,304.37	21,616,319,117.89	22,902,976,448.93	23,668,494,206.27	24,745,515,209.82	40,273,443,159.16	58,085,200,468.20	84,006,511,930.55		40,590,888.10	41,280,626.44
Domestic Claims	-23,847,709.69	1,885,131,142.46	1,873,807,183.49	2,028,957,342.73	2,411,597,729.92	2,496,519,062.46	2,685,240,421.33	4,316,485,335.80	6,966,928,713.06	8,857,704,487.83		5,031,817.01	6,130,750.57
Net Claims on Central Government	-1,024,203,002.25	1,050,425,931.27	1,218,834,667.32	1,255,530,261.28	1,548,646,696.96	2,031,774,224.09	2,195,411,208.41	4,014,874,898.09	6,439,282,586.28	8,045,520,594.23		4,636,916.01	5,731,008.28
Claims on Central Government	2,246,012,881.84	1,888,538,492.52	2,273,053,198.66	2,620,306,139.59	2,738,773,804.86	2,978,270,299.68	3,186,271,122.40	5,598,206,535.08	8,298,885,386.12	13,434,742,848.85		7,155,621.00	7,206,353.91
of which: Securities Other than Shares	1,282,058,425.55	1,041,256,825.36	1,354,647,836.07	1,738,161,413.25	1,883,996,199.01	1,984,147,610.08	2,219,186,779.04	4,440,121,511.31	6,608,105,197.48	11,307,721,896.70		0.00	6,867,418.56
Loans	963,954,456.29	847,281,667.16	918,405,362.59	882,144,726.34	854,777,605.86	994,122,689.61	967,084,343.36	1,158,085,023.77	1,690,780,188.64	2,127,020,952.15		245,686.22	334,241.10
Loans and Advances	557,967,758.83	441,294,969.70	453,167,575.54	416,906,939.29	389,539,818.81	450,658,841.88	423,620,495.64	709,564,039.01	1,049,930,696.57	1,560,372,567.07		34,531.94	35,066.35
Amounts Due from Govt including SDR Drawdowns	405,986,697.46	405,986,697.46	465,237,787.05	465,237,787.05	465,237,787.05	543,463,847.72	543,463,847.72	448,520,984.75	640,849,492.08	566,648,385.08		211,154.28	299,174.75
Export Incentives	0.00	0.00	0.00	0.00	0.00	0.00	0.00	0.00	0.00	0.00		0.00	0.00
Less Liabilities to Central Government	3,270,215,884.09	838,112,561.24	1,054,218,531.34	1,364,775,878.32	1,190,127,107.91	946,496,075.59	990,859,913.99	1,583,331,636.98	1,859,602,799.84	5,389,222,254.62		2,518,704.99	1,475,345.63
Of which: Deposits	3,270,215,884.09	838,112,561.24	1,054,218,531.34	1,364,775,878.32	1,190,127,107.91	946,496,075.59	990,859,913.99	1,583,331,636.98	1,859,602,799.84	5,389,222,254.62		2,518,704.99	1,475,345.63
Other	0.00	0.00	0.00	0.00	0.00	0.00	0.00	0.00	0.00	0.00		0.00	0.00
Claims on Other Sectors	1,000,355,292.57	834,705,211.19	654,972,516.17	773,427,081.45	862,951,032.96	464,744,838.37	489,829,212.93	301,610,437.71	527,646,126.78	812,183,893.60		394,901.00	399,742.29
Other Financial Corporations	12,986,635.27	12,976,151.03	13,602,645.94	14,588,403.94	63,414,783.51	25,307,666.81	28,216,636.43	32,493,405.07	71,573,929.14	153,883,742.34		31,897.51	33,121.19
State and Local Government	0.00	0.00	0.00	0.00	0.00	0.00	0.00	0.00	0.00	0.00		0.00	0.00
Public Non Financial Corporations	963,938,268.05	778,956,909.14	579,963,269.97	679,383,600.01	707,274,263.92	341,962,235.89	359,338,872.72	125,045,425.40	244,647,109.88	332,483,498.63		214,094.95	212,984.77
Private Sector	23,430,389.25	42,772,151.02	61,406,600.26	79,455,077.51	92,261,985.53	97,474,935.67	102,273,703.78	144,071,607.24	211,425,087.76	325,816,652.62		148,908.53	153,636.53
Claims on Other Depository Corporations	267,624,056.04	261,303,321.91	238,753,031.59	207,009,026.95	229,347,409.30	246,227,512.18	266,265,290.73	392,377,252.77	503,151,449.55	684,600,925.61		364,055.43	361,687.12
Of which: Loans	267,624,056.04	261,303,321.91	238,753,031.59	207,009,026.95	229,347,409.30	246,227,512.18	266,265,290.73	392,377,252.77	503,151,449.55	684,600,925.61		364,055.43	361,687.12
Other Liabilities to ODCs	2,666,026,665.35	2,901,005,739.21	3,100,647,536.01	3,107,865,677.76	3,216,633,940.85	3,876,066,859.55	3,854,578,282.87	5,812,079,968.88	8,128,905,484.34	10,984,562,862.67		7,235,511.28	7,148,143.79
Of which: Aftades Balances	0.00	0.00	0.00	0.00	0.00	0.00	0.00	0.00	0.00	0.00		0.00	0.00
Securities	683,711,355.79	1,196,912,067.35	1,309,913,863.13	1,094,629,530.65	1,078,752,001.46	1,460,737,223.38	1,519,969,710.79	1,701,520,057.58	2,432,925,529.23	3,557,870,717.73		2,260,627.63	2,214,947.71
												0.00	0.00
Other Items(Net)	-24,318,336,502.72	-19,609,306,255.01	-19,734,596,625.30	-22,488,218,425.97	-23,478,665,250.56	-24,801,814,491.19	-25,648,587,780.63	-41,376,660,539.47	-58,744,025,789.94	-85,448,769,379.78		-42,430,526.95	-41,936,332.53
Shares and Other Equity	-25,202,259,045.14	-19,805,080,179.46	-19,579,648,458.36	-22,753,122,010.85	-23,550,146,670.91	-23,892,801,192.96	-25,053,448,266.86	-40,143,169,460.35	-58,155,147,571.29	-84,000,619,819.97		-42,225,068.30	-41,811,854.23
Other Items(Net)	-63,920,685.55	-652,745,707.09	-652,393,199.08	-396,662,893.13	-589,895,589.07	-1,529,336,116.22	-1,251,036,312.57	-2,400,043,318.75	-2,790,865,158.91	-3,189,753,793.28		-1,523,004.67	-2,100,723.61
Liabilities to Other Resident Sectors	0.00	0.00	0.00	0.00	0.00	0.00	0.00	0.00	0.00	0.00		0.00	0.00
Deposits and Securities Excluded from Base Money	947,843,227.98	848,519,631.54	497,445,032.14	661,566,478.01	661,377,009.41	620,322,818.00	655,896,798.59	1,166,552,239.63	2,201,986,940.26	1,741,604,233.46		1,317,546.03	1,976,245.32
Monetary Base	1,064,898,441.01	1,003,043,754.90	1,062,092,590.09	1,312,407,291.74	1,787,437,296.87	1,817,508,312.01	2,021,215,296.65	3,069,128,065.16	4,054,140,062.89	6,141,481,651.19		6,455,093.44	6,639,450.71
Bond Coins	80,542.92	79,344.94	79,163.84	79,154.38	79,154.84	78,794.30	76,968.83	66,290.72	59,094.22	51,536.90		20.39	16.95
Bond Notes	10,258,707.59	11,193,057.46	11,885,047.43	12,736,767.90	13,560,105.45	14,430,019.79	15,672,830.10	16,920,535.77	18,138,392.93	19,250,549.61		7,646.53	7,646.25
Zig Notes												1,240.55	12,162.56
ZiG Coins												8,848.60	33,390.00
Liabilities to ODCs	1,054,458,825.51	961,770,952.77	1,020,125,611.77	1,269,591,004.47	1,743,797,671.58	1,772,929,799.17	1,975,463,236.74	3,052,141,238.66	4,035,942,575.74	6,122,179,564.68		6,437,337.37	6,586,234.95
Local Currency Reserve Deposits	182,612,061.98	243,159,063.25	295,859,644.01	344,623,158.66	400,041,844.52	449,770,161.09	533,568,035.27	557,373,870.90	589,096,334.10	782,882,894.59		588,261.85	852,988.66
Foreign Currency Reserve Deposits	871,846,763.53	718,611,889.52	724,265,967.76	924,967,845.81	1,343,755,827.07	1,323,159,638.08	1,441,895,201.47	2,464,767,002.76	3,416,845,876.64	5,293,831,558.25		4,172,204.40	4,528,979.21
Excess reserves	100,364.99	30,000,399.73	30,002,767.04	30,000,364.99	30,000,364.99	30,000,364.99	30,000,364.99	30,000,364.99	30,000,364.99	45,465,111.84		1,676,871.11	1,204,267.07
Private Deposits	0.00	0.00	0.00	0.00	0.00	0.00	0.00	0.00	0.00	0.00		0.00	0.00

Source: Reserve Bank of Zimbabwe, 2023/4

NB: * Other Foreign Liabilities include blocked funds amounting to USD2.2 billion assumed by the Central Bank on behalf of Government.

*Statistics are denominated in ZiG

TABLE 3 : OTHER DEPOSITORY CORPORATIONS SURVEY (\$ '000)

	Jun-23	Jul-23	Aug-23	Sep-23	Oct-23	Nov-23	Dec-23	Jan-24	Feb-24	Mar-24		*Apr-24	*May-24
Net Foreign Assets	3,867,276,441.25	3,637,584,517.45	3,456,910,411.50	3,856,433,150.89	3,655,272,818.27	3,805,941,218.28	3,894,249,714.95	6,495,681,814.07	8,434,156,471.26	11,606,860,302.06		6,841,962.55	6,864,056.48
Claims on Non Residents	5,707,374,025.18	5,099,940,234.73	4,942,678,600.40	5,547,113,224.93	5,232,466,845.31	5,592,082,221.64	5,729,082,981.88	9,507,866,394.28	12,860,635,148.65	18,155,224,039.23		10,973,836.76	11,293,656.76
<i>Of Which: Foreign Currency</i>	2,249,201,574.76	1,584,403,308.04	1,505,916,176.81	2,015,621,585.66	2,312,575,134.73	2,558,589,332.45	2,868,505,570.48	5,196,670,641.24	7,309,076,955.04	9,785,505,639.81		4,794,837.35	4,337,566.82
<i>Deposits</i>	3,441,353,382.68	3,502,402,457.26	3,423,237,567.41	3,515,981,784.12	2,903,444,523.75	3,019,701,118.75	2,843,740,238.47	4,283,885,090.87	5,518,707,074.63	8,323,896,983.03		6,152,462.49	6,929,621.83
<i>Other</i>	16,819,067.74	13,134,469.43	13,524,856.19	15,509,855.15	16,447,186.84	13,791,770.44	16,837,172.93	27,310,662.17	32,851,118.98	45,821,476.40		26,536.92	26,468.12
Less Liabilities to Non Residents	1,840,097,583.93	1,462,355,717.28	1,485,768,188.90	1,690,680,074.03	1,577,194,027.04	1,786,141,003.36	1,834,833,266.93	3,012,184,580.21	4,426,478,677.39	6,548,363,797.17		4,131,874.21	4,429,600.28
<i>Of Which: Deposits</i>	820,337,332.33	764,960,085.21	772,511,911.80	827,268,243.95	655,899,412.79	782,004,591.95	776,859,238.67	1,316,061,176.34	1,936,356,521.78	2,837,026,028.04		1,874,340.18	1,941,676.30
<i>Loans</i>	1,019,760,251.61	697,395,632.08	713,256,277.09	863,411,830.08	921,294,614.24	1,004,136,411.41	1,057,974,028.26	1,696,123,403.87	2,490,122,155.61	3,711,337,769.13		2,257,534.02	2,487,923.98
<i>Other</i>	0.00	0.00	0.00	0.00	0.00	0.00	0.00	0.00	0.00	0.00		0.00	0.00
Net Domestic Assets (NDA)	10,381,649,903.19	9,339,710,968.86	9,929,068,164.23	11,838,030,324.64	13,078,743,914.01	13,788,565,015.66	14,986,724,817.13	22,694,566,232.26	32,143,979,019.53	47,514,528,237.56		31,782,273.98	33,785,421.43
Domestic Claims	10,666,408,952.84	9,209,603,094.31	9,141,777,182.20	11,119,177,418.85	11,687,725,438.76	12,268,418,987.27	13,976,109,402.78	22,239,001,679.53	32,663,124,711.79	49,195,099,829.70		30,483,864.43	31,543,958.04
Net Claims on Central Government	559,297,143.29	868,977,442.69	816,543,472.61	1,214,015,894.82	1,136,603,191.66	1,394,794,498.55	2,438,353,042.48	4,132,044,630.04	6,067,137,107.85	8,137,248,966.22		5,584,180.30	5,547,369.71
Claims on Central Government	991,907,309.36	1,249,413,254.51	1,198,068,974.66	1,328,518,501.28	1,283,656,495.90	1,528,269,866.01	2,639,837,914.78	4,301,674,207.46	6,407,714,882.09	8,652,815,980.77		5,827,034.95	5,897,338.50
Securities	981,773,844.67	1,242,045,163.04	1,190,599,025.63	1,318,582,684.20	1,272,839,666.04	1,517,348,442.81	2,627,512,618.11	4,283,761,418.99	6,381,641,818.99	8,605,206,635.58		5,583,192.64	5,867,704.45
Loans	10,133,464.70	7,368,091.47	7,469,949.03	9,935,817.09	10,816,829.86	10,921,423.13	12,325,296.66	17,912,408.90	26,073,063.10	47,609,345.19		243,842.32	29,634.05
<i>Other</i>	-	-	-	-	-	-	-	-	-	-		-	-
Less Liabilities to Central Government	432,610,166.07	380,435,811.82	381,525,502.04	114,502,606.47	147,053,304.24	133,475,367.46	201,484,872.29	169,629,577.43	340,577,774.24	515,567,014.55		242,854.65	349,968.79
<i>Of which: Deposits</i>	432,610,166.07	380,435,811.82	381,525,502.04	114,502,606.47	147,053,304.24	133,475,367.46	201,484,872.29	169,629,577.43	340,577,774.24	515,567,014.55		242,854.65	349,968.79
<i>Other</i>	0.00	0.00	0.00	0.00	0.00	0.00	0.00	0.00	0.00	0.00		0.00	0.00
Claims on Other Sectors	10,107,111,809.54	8,340,625,651.62	8,325,233,709.58	9,905,161,524.04	10,551,122,247.10	10,873,624,488.72	11,537,756,360.30	18,106,957,049.49	26,595,987,603.94	41,057,850,863.48		24,899,684.12	25,996,588.33
Other Financial Corporations	359,842,961.20	273,509,229.65	272,954,265.73	330,807,280.13	339,082,318.90	341,478,270.25	182,762,458.86	334,638,969.24	390,381,073.67	649,601,336.03		295,553.50	371,891.66
State and Local Government	83,001.69	68,073.17	75,802.84	92,048.54	98,056.56	59,769.23	73,453.85	198,797.86	232,003.28	143,347.81		1,803.44	1,371.69
Public Non Financial Corporations	462,710,245.53	365,810,830.89	362,152,685.81	384,993,537.99	417,498,998.98	417,032,273.67	419,914,631.20	662,004,891.16	905,031,120.73	1,283,162,917.94		769,195.30	753,308.55
Private Sector	9,284,475,601.11	7,701,237,517.92	7,690,050,955.21	9,189,268,657.38	9,794,442,872.67	10,115,054,175.57	10,935,005,816.39	17,110,114,391.24	25,300,343,406.26	39,124,943,261.71		23,833,131.89	24,870,016.43
Claims on the Central Bank	4,434,783,343.65	4,138,866,267.43	4,653,650,898.99	5,265,804,171.22	5,912,703,283.03	6,326,849,329.56	5,977,105,227.74	9,099,022,563.30	12,598,181,489.84	16,737,574,909.26		11,097,658.79	12,455,525.64
Currency	1,984,484.37	1,489,019.97	2,292,108.14	2,465,644.54	2,425,404.82	2,705,276.98	3,398,376.89	2,947,927.87	3,143,565.55	2,830,957.84		7,453.94	14,987.06
Reserves	4,424,349,970.82	4,137,377,247.46	4,651,358,790.85	5,263,338,526.67	5,910,277,878.21	6,324,144,052.58	5,973,706,850.85	9,096,074,635.43	12,595,037,924.29	16,734,743,951.43		11,090,204.85	12,420,731.87
Securities	8,448,888.46	0.00	0.00	0.00	0.00	0.00	0.00	0.00	0.00	0.00		0.00	19,806.72
Other Claims	0.00	0.00	0.00	0.00	0.00	0.00	0.00	0.00	0.00	0.00		0.00	0.00
Liabilities to the Central Bank	39,166,568.11	87,827,165.17	84,841,425.78	82,493,417.82	84,628,889.30	92,939,919.06	55,157,360.84	114,298,041.18	105,237,097.37	95,704,985.13		67,448.03	50,898.37
Other Items(Net)	4,680,375,825.19	3,920,931,227.71	3,781,518,491.17	4,464,457,847.61	4,437,055,918.48	4,713,763,382.12	4,911,332,452.56	8,529,159,969.39	13,012,090,084.74	18,322,441,516.27		9,731,801.21	10,163,163.89
Shares and Other Equity	5,799,547,829.81	5,483,957,540.60	5,375,919,368.23	6,197,753,489.98	6,517,863,214.28	6,770,741,300.38	7,483,381,595.52	10,593,843,881.30	14,852,881,225.62	23,399,335,886.93		11,639,746.46	13,617,857.06
Liabilities to other resident sectors	64,321,874.21	58,256,168.71	56,751,608.46	90,032,397.59	83,441,760.88	89,997,662.25	138,722,557.11	182,726,965.66	279,727,919.49	361,061,719.66		222,678.57	4,558.25
Other Items(Net)	-1,183,493,878.83	-1,621,282,481.61	-1,651,152,485.52	-1,823,328,039.96	-2,164,249,056.68	-2,146,975,580.51	-2,710,771,700.07	-2,247,410,877.57	-2,120,519,060.37	-5,437,956,090.32		-2,130,623.82	-3,459,251.43
Deposits and Securities Included in Broad Money	14,248,926,344.43	12,977,295,486.31	13,385,978,575.73	15,694,463,475.53	16,734,016,732.29	17,594,506,233.94	18,880,974,532.07	29,190,248,046.34	40,578,135,490.79	59,121,388,539.63		38,624,236.53	40,649,477.91
Deposits Included in Broad Money	14,244,682,762.54	12,975,158,042.76	13,382,795,891.99	15,691,777,986.61	16,730,519,506.06	17,590,333,042.62	18,838,163,125.87	29,182,930,103.98	40,568,677,127.34	59,114,397,682.94		38,621,441.08	40,645,105.30
<i>Transferable Deposits</i>	13,178,109,450.38	12,150,500,072.13	12,522,593,843.18	14,746,268,275.64	15,543,135,460.62	16,351,245,253.30	17,550,959,163.20	27,433,139,639.80	37,763,111,417.94	54,658,584,424.60		35,915,961.93	37,368,646.98
<i>of which FCAs</i>	11,634,530,484.57	10,099,327,960.39	10,172,409,984.27	12,309,119,479.36	12,388,978,422.26	12,751,597,340.40	13,391,882,427.59	22,891,974,397.20	32,954,377,682.43	47,588,241,673.51		29,421,560.87	29,788,818.17
<i>Other Deposits (Time Deposits)</i>	1,066,573,312.15	824,657,970.63	860,202,048.80	945,509,710.97	1,187,384,045.43	1,239,087,789.32	1,287,203,962.67	1,749,790,464.18	2,805,565,709.39	4,455,813,258.33		2,705,479.15	3,276,458.32
<i>of which FCAs</i>	852,167,654.54	616,409,108.42	586,082,872.02	715,202,149.51	865,876,028.52	823,225,160.91	878,430,928.79	1,378,784,627.54	2,089,992,436.79	3,750,078,066.25		2,426,638.27	2,953,225.13
Money Market Instruments	4,243,581.90	2,137,443.55	3,182,683.74	2,685,488.92	3,497,226.23	4,173,191.32	42,811,406.21	7,317,942.35	9,458,363.45	6,990,856.69		2,795.45	4,372.61

Source: Reserve Bank of Zimbabwe, 2024

*Statistics are denominated in ZIG

TABLE 4.1: OTHER DEPOSITORY CORPORATIONS -ASSETS

End of	ZWL\$ millions																		TOTAL
	Bond Notes & Coins	Foreign Notes & Coin	Balances with RBZ	Balances with Other Depository Corporations	Balances with Foreign Banks	Other Claims on Non-residents	Debt Securities				Loans and Advances				Other claims	Contigent Assets	Other Assets	Non Financial Assets	
							Government Securities	Local Government securities	Public Enterprises	Other ²	Government	Local Government	Public Enterprises	Other Institutional Units					
2021																			
Jan	1,483.3	42,733.9	77,994.4	13,109.2	40,071.8	10,922.0	10,322.7	10.2	0.0	212.4	16.7	18.0	1,264.3	77,984.0	5,315.2	25,036.2	15,951.2	41,028.5	363,474.0
Feb	1,735.4	41,180.7	76,140.3	17,748.1	39,141.4	6,341.4	15,612.1	9.2	0.0	238.0	24.1	22.7	1,493.7	84,845.3	5,413.6	28,339.2	19,441.2	42,761.3	380,487.7
Mar	1,457.1	40,953.3	83,032.1	6,945.5	42,516.8	8,733.6	17,602.7	8.4	19.2	449.7	15.2	21.7	1,400.3	90,291.7	4,912.2	32,908.1	22,849.5	40,104.9	394,221.9
Apr	1,699.7	40,964.4	85,330.2	6,844.8	49,733.4	7,679.0	19,384.3	7.7	19.2	571.8	19.9	12.7	1,336.7	104,118.1	5,432.6	34,537.9	25,207.8	41,034.6	423,934.8
May	1,906.1	30,579.1	94,330.9	7,907.2	63,644.8	11,582.4	19,197.1	7.0	152.7	611.0	21.8	16.6	1,263.7	111,185.7	5,063.0	35,592.3	24,975.4	40,256.6	448,293.6
Jun	1,702.8	30,255.6	75,795.2	25,605.9	72,780.6	17,601.3	17,610.8	6.5	19.5	1,385.2	17.9	77.8	1,511.9	125,592.3	5,203.8	26,856.5	29,616.4	42,418.7	474,058.5
Jul	2,139.9	30,509.1	104,983.5	17,817.9	82,032.9	25,314.3	23,160.6	6.0	290.8	1,264.1	17.3	67.8	1,351.1	135,107.8	5,762.2	26,869.2	33,897.2	42,726.7	533,318.3
Aug	2,551.1	33,323.4	93,806.9	11,919.2	72,753.9	25,194.9	35,371.1	5.4	339.7	1,111.2	22.5	63.9	1,583.3	150,558.7	7,014.2	32,281.1	34,820.2	46,819.4	549,540.1
Sep	2,853.7	38,500.1	100,996.0	8,626.8	68,707.9	25,023.4	36,196.3	5.1	366.9	948.5	21.1	62.5	1,531.1	154,818.9	6,587.8	31,981.0	35,461.8	45,544.7	558,233.5
Oct	2,611.1	50,074.7	108,009.2	9,575.8	89,822.4	26,924.2	43,786.5	4.3	188.1	1,054.2	21.2	75.4	1,683.9	172,358.5	6,987.7	49,581.0	47,370.6	47,611.9	657,740.6
Nov	2,721.5	53,424.3	107,781.7	15,560.6	74,072.3	29,748.5	47,418.1	3.7	187.0	2,678.7	21.2	74.8	1,882.5	195,765.6	7,682.2	52,327.7	45,567.2	54,967.5	691,885.0
Dec	2,838.3	50,031.0	118,451.3	13,654.0	91,352.6	33,690.9	41,452.1	3.0	186.0	6,192.4	21.1	167.5	2,998.6	212,438.0	14,917.3	60,917.0	48,759.9	71,817.7	769,888.8
2022																			
Jan	2,891.2	53,378.3	116,654.8	13,232.3	69,668.2	30,774.3	40,241.6	2.4	186.8	2,906.7	20.3	163.0	4,023.2	228,616.6	16,284.0	53,627.8	55,303.6	85,737.0	773,712.0
Feb	2,577.7	62,064.5	122,479.8	17,480.5	76,802.2	28,703.5	49,241.3	1.6	0.0	3,242.5	20.3	158.1	5,761.9	249,205.9	16,681.8	55,099.6	59,171.4	86,732.0	835,425.0
Mar	2,111.5	76,544.2	142,962.5	19,239.6	87,884.5	43,284.1	50,566.9	0.9	0.0	2,970.2	19.4	253.4	6,635.8	296,282.4	16,435.1	65,660.6	69,287.0	94,293.1	974,431.2
Apr	2,624.9	74,716.9	160,466.5	28,352.1	123,190.3	26,628.8	63,944.8	0.2	0.0	2,583.9	37.5	252.4	7,258.1	338,207.2	30,154.8	53,372.3	73,993.0	90,352.8	1,076,136.5
May	3,155.9	142,118.9	236,166.0	35,928.9	207,812.8	61,757.6	70,936.8	0.0	155.0	3,762.8	41.3	289.0	16,588.0	455,287.9	36,125.5	134,993.5	111,577.7	130,617.1	1,647,314.7
Jun	2,801.2	138,347.1	266,691.0	45,952.0	241,920.1	63,631.8	86,890.0	0.0	654.0	5,297.4	61.2	226.3	14,282.6	549,799.2	38,578.3	169,511.8	130,604.3	205,601.3	1,960,850.3
Jul	2,427.6	159,024.6	315,832.5	39,388.2	230,432.5	41,246.8	91,509.2	0.0	394.3	4,940.5	100.7	349.7	22,911.0	638,556.7	45,361.4	144,090.2	143,606.3	242,024.6	2,122,196.7
Aug	2,640.6	263,637.4	411,439.9	69,203.5	311,107.0	29,186.6	100,187.1	0.0	330.1	6,912.2	113.5	287.1	46,504.1	764,466.3	46,788.2	167,029.4	254,942.9	244,934.2	2,716,210.1
Sep	3,030.7	289,230.8	504,071.1	75,446.7	417,007.1	18,185.0	143,464.9	0.0	267.4	8,265.9	115.1	306.3	41,560.9	902,078.3	51,664.5	146,133.1	231,760.0	285,781.8	3,118,369.8
Oct	3,022.6	300,240.3	525,870.3	104,483.2	399,979.7	22,895.3	151,757.7	0.0	204.7	4,590.6	116.5	342.0	43,335.5	936,397.1	58,632.8	165,306.9	267,183.8	298,996.3	3,273,355.4
Nov	3,251.4	286,365.2	575,885.7	111,716.1	342,790.1	17,089.0	198,814.4	0.0	142.0	6,078.2	119.5	303.6	43,195.4	1,042,144.5	73,069.8	170,944.8	232,107.1	302,373.7	3,406,390.5
Dec	3,361.7	295,435.1	652,284.4	119,932.8	351,906.8	7,965.4	288,844.0	0.0	20,072.7	8,831.7	114.4	282.6	30,272.3	1,143,910.8	84,048.5	159,126.2	234,748.7	418,944.7	3,820,082.5
2023																			
Jan	4,923.3	379,874.0	704,168.6	151,980.1	389,342.8	-1,443.6	319,807.4	0.0	23,774.5	8,624.7	228.5	251.2	44,113.2	1,348,919.7	137,477.6	227,545.4	251,246.0	451,149.8	4,441,950.8
Feb	1,880.1	436,062.8	743,888.5	81,067.5	518,081.0	21,964.4	332,626.9	0.0	26,717.2	6,974.7	319.0	197.4	44,691.5	1,538,078.6	142,383.8	226,933.0	281,339.4	490,831.3	4,894,037.1
Mar	2,031.6	425,326.5	817,631.1	112,374.3	531,935.4	41,928.7	360,626.2	0.0	24,689.0	10,382.7	432.2	149.8	48,725.4	1,745,783.1	166,893.5	554,840.9	315,882.3	532,130.1	5,691,762.4
Apr	1,844.7	462,081.4	972,122.7	161,740.7	620,095.0	32,207.0	391,587.8	0.0	28,119.0	19,573.0	559.8	99.3	54,058.4	1,822,350.9	178,895.0	214,270.9	411,870.0	572,012.3	5,943,487.7
May	1,107.2	1,048,116.4	2,049,066.1	309,234.1	1,554,969.0	84,147.3	653,025.9	0.0	76,351.5	16,564.4	4,599.1	80.3	112,188.1	4,068,894.1	366,505.1	607,438.1	788,546.8	884,349.9	12,625,183.4
Jun	1,984.5	2,249,201.6	4,424,350.0	471,360.3	3,050,984.1	390,369.2	981,773.8	0.0	212,126.8	8,070.8	18,582.4	83.0	260,946.3	8,977,244.2	669,100.1	1,390,786.2	1,582,985.5	2,782,639.3	27,472,588.1
Jul	1,489.0	1,584,403.3	4,137,377.2	380,493.0	3,132,849.9	369,552.6	1,242,045.2	0.0	165,764.7	17,713.9	7,368.1	68.1	208,253.7	7,144,225.5	821,517.0	829,382.3	1,411,037.1	3,124,457.4	24,577,997.9
Aug	2,292.1	1,505,916.2	4,651,358.8	448,025.8	3,179,274.3	245,546.0	1,190,599.0	0.0	165,103.5	7,939.8	7,469.9	75.8	205,341.5	7,142,066.9	817,682.7	701,626.2	1,348,230.8	3,086,091.3	24,704,640.2
Sep	2,465.6	2,015,621.6	5,263,338.5	560,033.8	3,210,332.7	305,649.1	1,318,582.7	0.0	175,013.5	10,773.5	9,935.8	92.0	219,878.9	8,628,418.0	892,737.1	776,997.6	1,646,406.8	3,310,710.4	28,346,987.7
Oct	2,425.4	2,312,575.1	5,910,277.9	751,077.6	2,663,186.5	240,258.0	1,272,839.7	0.0	190,359.3	21,408.8	10,816.8	98.1	237,525.7	9,281,352.1	844,462.4	958,746.4	1,741,207.9	3,433,150.2	29,871,767.9
Nov	2,705.3	2,558,589.3	6,324,144.1	730,377.0	2,788,783.6	230,917.5	1,517,348.4	0.0	188,949.4	34,470.7	10,921.4	59.8	238,702.3	9,523,818.5	907,759.0	1,046,257.0	2,150,227.0	3,544,388.6	31,798,418.9
Dec	3,398.4	2,868,505.6	5,973,706.9	918,524.5	2,631,445.7	212,294.5	2,627,512.6	0.0	182,480.9	38,249.3	12,325.3	73.5	248,699.8	10,110,961.4	984,502.1	1,184,706.9	2,319,603.9	4,087,896.6	34,404,887.7
2024																			
Jan	2,947.9	5,196,670.6	9,096,074.6	1,414,527.9	3,957,664.6	326,220.5	4,283,761.8	0.0	306,771.2	57,595.6	17,912.4	198.8	374,088.3	16,298,021.8	1,109,251.7	1,949,662.4	3,467,246.2	5,133,753.8	52,992,370.2
Feb	3,143.6	7,309,077.0	12,595,037.9	2,395,225.7	5,340,576.7	178,130.4	6,381,641.8	0.0	437,989.9	78,292.7	26,073.1	232.0	488,602.8	24,095,690.3	1,538,423.6	2,608,075.1	4,122,833.9	6,863,317.4	74,462,363.7
Mar	2,831.0	9,785,505.6	16,734,744.0	3,185,636.7	7,548,560.1	775,336.9	8,605,206.6	0.0	585,769.6	126,026.3	47,609.3	143.3	729,484.9	37,149,745.6	2,535,252.5	2,860,196.6	5,844,376.9	10,808,889.0	107,325,315.0
*Apr	7.5	4,794.8	11,004.0	2,108.7	5,798.1	354.3	5,583.2	0.0	348.4	37.2	330.0	1.8	440.5	22,799.4	1,336.2	2,510.2	6,102.7	5,490.3	69,047.3
*May	15.0	4,337.6	12,420.7	2,281.4	6,437.2	492.4	5,867.7	0.0	339.6	23.7	49.4	1.4	433.4	23,728.2	1,520.6	2,114.7	7,240.8	5,731.5	73,035.2

Source: Reserve Bank of Zimbabwe, 2024

Notes

1. Government securities includes treasury bills and bonds
2. Includes bankers acceptances, discounted bills and negotiable certificates of deposits.
3. Includes households, other financial corporations.

*Statistics are denominated in ZIG

TABLE 4.2 : OTHER DEPOSITORY CORPORATIONS - LIABILITIES

ZWL\$ millions

End of	Deposits							Debt Securities	Foreign Liabilities	Amounts Owing to			Capital and Reserves	Contingent Liabilities	Other Liabilities	TOTAL
	Demand	Savings	Time Deposits	Total Deposits from the Public	Other Depository Corporations	Government	Total			RBZ	Other Depository	Other Financial Corporations				
2021																
Jan	188,337.3	17,667.3	11,376.7	217,381.3	2,730.8	5,453.7	225,565.8	1,422.4	15,750.7	391.1	600.9	376.7	58,123.9	25,036.2	36,206.3	363,474.0
Feb	189,154.3	18,991.1	14,072.8	222,218.2	2,959.1	4,788.2	229,965.5	1,457.4	15,908.6	409.2	581.4	609.9	63,583.8	28,339.2	39,632.7	380,487.7
Mar	193,674.2	21,569.9	14,209.4	229,453.4	4,691.2	4,875.8	239,020.5	1,641.2	14,997.2	75.4	1,378.2	408.9	67,061.8	32,908.1	36,730.7	394,221.9
Apr	219,936.5	23,818.3	13,746.7	257,501.5	2,725.1	5,382.5	265,609.2	1,503.8	15,748.4	176.5	939.0	409.9	68,812.8	34,537.9	36,197.4	423,934.8
May	232,585.8	26,296.1	18,415.5	277,297.4	2,205.9	6,832.6	286,335.9	1,525.8	16,063.1	654.2	540.1	429.0	69,562.0	35,592.3	37,586.2	448,293.6
Jun	249,167.5	27,977.7	21,449.6	298,594.8	2,906.1	6,295.3	307,796.2	1,559.7	15,430.6	662.3	939.0	462.6	72,403.8	26,856.5	47,947.9	474,058.5
Jul	271,359.4	31,671.3	23,074.4	326,105.1	3,016.7	5,050.7	334,172.4	1,523.2	16,041.4	706.9	750.8	552.8	76,406.3	26,869.2	76,295.4	533,318.3
Aug	275,007.8	29,893.2	29,352.2	334,253.2	3,661.5	5,912.2	343,826.8	1,873.1	18,699.5	1,444.4	2,300.1	478.6	82,627.2	32,281.1	66,009.2	549,540.1
Sep	301,829.4	30,564.7	26,426.5	358,820.7	3,719.1	3,512.9	366,052.6	3,191.9	16,236.1	1,453.1	71.3	375.4	84,564.6	31,981.0	54,307.5	558,233.5
Oct	350,366.7	33,145.0	27,967.9	411,479.6	2,824.1	3,162.8	417,466.5	3,729.7	21,509.9	1,095.3	1,109.9	503.1	92,871.8	49,581.0	69,873.5	657,740.6
Nov	363,455.0	33,905.6	33,256.8	430,617.4	3,325.7	2,899.2	436,842.3	4,007.8	19,465.9	2,726.5	1,556.1	347.1	104,310.9	52,327.7	70,300.6	691,885.0
Dec	396,412.5	33,935.5	37,464.8	467,812.7	3,922.1	4,020.7	475,755.5	3,696.3	23,643.2	2,808.1	2,405.3	139.8	128,421.4	60,917.0	72,102.3	769,888.8
2022																
Jan	392,702.2	32,298.0	39,346.3	464,346.5	2,962.5	4,027.0	471,336.0	3,685.3	25,398.5	2,688.6	1,416.9	230.5	144,852.4	53,627.8	70,476.0	773,712.0
Feb	413,978.3	37,494.3	47,592.5	499,065.1	3,229.3	4,407.7	506,702.1	4,456.2	30,483.6	2,120.4	1,769.7	226.8	153,788.5	55,099.6	80,778.2	835,425.0
Mar	488,137.1	37,893.9	54,213.9	580,244.9	3,062.2	5,330.5	588,637.7	4,510.9	33,995.7	2,137.9	3,281.0	810.6	175,156.3	65,660.6	100,240.6	974,431.2
Apr	562,613.7	46,129.7	52,760.1	661,503.5	6,377.5	7,656.8	675,537.9	4,246.9	38,472.7	2,173.0	3,877.2	486.8	178,614.3	53,372.3	119,355.4	1,076,136.5
May	830,166.0	61,112.6	70,113.9	961,392.5	7,310.9	7,417.6	976,120.9	6,165.3	73,411.8	2,383.3	3,241.0	321.8	243,544.4	134,993.5	207,132.5	1,647,314.7
Jun	961,316.9	66,716.9	81,118.5	1,109,152.4	5,627.3	10,226.2	1,125,005.9	7,157.9	83,048.1	2,898.5	4,589.8	345.2	355,060.9	169,511.8	213,232.2	1,960,850.3
Jul	1,016,820.2	79,550.5	94,495.2	1,190,865.8	1,789.6	9,363.5	1,202,018.9	8,137.9	100,313.8	2,814.9	5,020.5	1,339.1	419,883.3	144,090.2	238,578.1	2,122,196.7
Aug	1,367,431.3	85,931.5	134,512.9	1,587,875.7	2,415.4	7,892.4	1,598,183.5	12,785.6	119,851.6	3,230.7	5,771.2	555.2	491,336.5	167,029.4	317,466.4	2,716,210.1
Sep	1,648,027.7	92,678.5	157,504.6	1,898,210.8	1,482.9	8,707.2	1,908,401.0	14,047.5	143,842.3	3,720.2	9,246.7	587.2	553,942.2	146,133.1	338,449.6	3,118,369.8
Oct	1,615,381.5	76,774.2	166,880.7	1,859,036.4	2,028.0	6,673.7	1,867,738.0	15,558.9	163,649.9	28,072.2	8,610.3	762.5	581,740.3	165,306.9	451,916.4	3,273,355.4
Nov	1,771,644.8	81,518.1	189,465.9	2,042,628.9	1,547.6	6,731.4	2,050,907.9	13,438.5	139,370.8	19,973.5	10,489.1	339.6	612,977.2	170,944.8	387,949.1	3,406,390.5
Dec	1,990,867.6	90,317.0	234,004.4	2,315,189.0	2,754.1	7,866.7	2,325,809.8	14,149.0	177,214.1	10,597.8	15,234.4	752.5	750,161.5	159,126.2	367,037.4	3,820,082.5
2023																
Jan	2,270,946.6	100,094.1	275,805.1	2,646,845.8	1,676.5	41,821.3	2,690,343.7	15,056.5	196,129.5	4,974.3	12,291.7	675.5	881,874.7	227,545.4	413,059.5	4,441,950.8
Feb	2,496,192.1	98,177.2	294,332.5	2,888,701.8	1,956.9	11,040.2	2,901,698.9	15,711.7	225,209.4	8,092.9	20,822.5	3,109.0	951,831.6	226,933.0	540,628.1	4,894,037.1
Mar	2,710,394.6	121,937.7	333,589.3	3,165,921.6	1,430.8	6,188.7	3,173,541.1	16,082.6	256,206.0	9,639.9	22,996.8	3,714.6	1,036,325.4	554,840.9	618,415.2	5,691,762.4
Apr	3,144,048.4	159,872.5	269,932.0	3,573,852.9	573.4	9,702.2	3,584,128.5	1,843.4	318,092.2	13,321.9	29,787.9	6,418.8	1,137,637.3	214,270.9	637,986.8	5,943,487.7
May	6,481,742.5	169,496.7	556,927.2	7,208,166.4	1,068.6	50,511.7	7,259,746.7	4,659.4	783,531.0	78,332.6	74,083.0	30,583.3	2,224,856.6	607,438.1	1,561,952.6	12,625,183.4
Jun	12,937,869.2	240,252.2	1,073,317.8	14,251,439.2	4,578.8	432,610.2	14,688,628.1	4,243.6	1,833,341.2	39,166.6	112,338.9	64,321.9	6,245,056.0	1,390,786.2	3,094,705.7	27,472,588.1
Jul	11,864,787.9	285,723.5	828,095.7	12,978,607.1	30,380.7	380,435.8	13,389,423.7	2,137.4	1,458,906.6	87,827.2	160,696.4	58,256.2	5,865,068.7	829,382.3	2,726,299.5	24,577,997.9
Aug	12,168,928.8	353,674.2	862,852.8	13,385,455.8	23,457.8	381,525.5	13,790,439.1	3,182.7	1,483,108.2	84,841.4	154,160.3	56,751.6	5,646,934.2	701,626.2	2,783,596.5	24,704,640.2
Sep	14,342,241.3	404,040.4	947,184.1	15,693,465.8	11,309.1	114,502.6	15,819,277.6	2,685.5	1,688,992.2	82,493.4	168,880.8	90,032.4	6,410,594.6	776,997.6	3,307,033.6	28,346,987.7
Oct	15,103,817.1	439,336.7	1,190,702.7	16,733,856.4	8,575.8	147,053.3	16,889,485.5	3,497.2	1,573,857.1	84,628.9	176,455.5	83,441.8	6,756,087.7	958,746.4	3,345,567.7	29,871,767.9
Nov	15,816,643.6	534,621.6	1,241,055.7	17,592,320.9	92,509.4	133,475.4	17,818,305.6	4,173.2	1,784,153.1	92,939.9	244,115.1	89,997.7	7,059,070.8	1,046,257.0	3,659,406.4	31,798,418.9
Dec	16,937,697.1	613,283.2	1,290,630.5	18,841,610.7	94,004.9	201,484.9	19,137,100.5	42,811.4	1,831,385.7	55,157.4	162,437.9	138,722.6	7,736,287.7	1,184,706.9	4,116,277.7	34,404,887.7
2024																
Jan	26,686,959.6	746,212.0	1,754,255.7	29,187,427.3	113,265.9	169,629.6	29,470,322.8	7,317.9	3,007,687.4	114,298.0	290,202.8	182,727.0	11,623,761.9	1,949,662.4	6,346,389.9	52,992,370.2
Feb	36,944,811.1	818,341.2	2,810,669.8	40,573,822.1	177,789.1	340,577.8	41,092,189.0	9,458.4	4,421,333.7	105,237.1	454,842.1	279,727.9	16,146,119.3	2,608,075.1	9,345,381.2	74,462,363.7
Mar	53,801,105.7	857,520.8	4,468,346.0	59,126,972.5	275,444.0	515,567.0	59,917,983.5	6,990.9	6,535,789.0	95,705.0	506,746.6	361,061.7	24,968,710.0	2,860,196.6	12,072,131.8	107,325,315.0
*Apr	35,042.5	873.5	2,711.3	38,627.3	161.4	242.9	39,031.6	2.8	4,126.0	67.4	358.1	222.7	12,859.8	2,510.2	9,868.8	69,047.3
*May	36,571.3	797.4	3,283.3	40,652.0	82.8	350.0	41,084.8	4.4	4,422.7	50.9	436.0	4.6	15,110.7	2,114.7	9,806.4	73,035.2

Source: Reserve Bank of Zimbabwe, 2024

*Statistics are denominated in ZiG

TABLE 5.2 : COMMERCIAL BANKS - LIABILITIES

ZWL\$ millions

End of	Deposits							Debt Securities	Foreign Liabilities	Amounts Owing to			Capital and Reserves	Contingent Liabilities	Other Liabilities	TOTAL
	Demand	Savings	Time Deposits	Total Deposits from the public	Other Depository Corporations	Government	Total			RBZ	Other Depository Corporations	Other Financial Corporations				
2021																
Jan	158,888.8	28,456.6	10,150.2	197,495.5	2,580.8	5,423.4	205,499.8	1,142.5	12,732.6	391.1	519.6	376.7	50,147.7	25,036.2	29,608.5	325,454.7
Feb	162,092.2	26,146.3	12,239.7	200,478.2	2,809.1	4,762.5	208,049.7	1,150.4	12,833.2	409.2	540.7	609.9	54,930.3	28,339.2	33,280.7	340,143.4
Mar	165,101.1	30,313.5	12,276.4	207,691.0	4,541.2	4,845.3	217,077.6	1,331.7	11,620.2	75.4	1,136.7	408.9	58,208.9	32,908.1	30,626.5	353,393.9
Apr	191,923.5	31,441.3	11,549.5	234,914.3	2,195.0	5,346.7	242,455.9	1,190.1	11,503.5	176.5	757.1	409.9	60,361.3	34,537.9	29,396.5	380,788.7
May	194,108.9	40,921.9	15,896.4	250,927.2	1,705.9	6,802.1	259,435.2	1,186.9	11,783.3	654.2	145.2	429.0	61,202.0	35,592.3	29,790.4	400,218.5
Jun	211,950.0	40,878.5	18,536.0	271,364.4	2,696.6	6,202.3	280,263.2	1,211.8	11,575.5	662.3	368.5	462.6	63,417.5	26,856.5	40,783.7	425,601.6
Jul	226,860.1	48,928.9	19,775.4	295,564.4	2,991.7	5,012.2	303,568.3	1,169.2	12,552.8	706.9	476.2	552.8	66,514.1	26,869.2	68,693.1	481,102.6
Aug	237,167.0	38,425.4	25,114.2	300,706.5	3,601.5	5,873.7	310,181.7	1,216.2	13,354.7	1,444.4	1,678.3	478.6	72,123.3	32,281.1	58,597.3	491,355.6
Sep	263,598.2	37,954.3	21,954.4	323,506.9	3,643.0	3,469.0	330,618.9	2,141.0	11,770.4	1,453.1	-110.6	375.4	71,255.0	31,981.0	46,729.4	496,213.6
Oct	299,038.0	50,766.0	22,882.7	372,686.7	2,824.1	3,023.7	378,534.5	2,411.8	14,077.4	1,095.3	1,109.9	503.1	78,644.6	49,581.0	61,280.0	587,237.6
Nov	307,063.4	52,309.9	27,875.3	387,248.6	3,325.7	2,764.9	393,339.3	2,869.4	12,437.2	2,726.5	1,352.5	347.1	89,288.6	52,327.7	61,678.3	616,366.5
Dec	334,599.0	58,318.5	30,455.6	423,373.1	3,842.1	3,855.7	431,070.9	3,027.0	13,896.4	2,808.1	1,693.3	139.8	109,665.4	60,917.0	63,170.8	686,388.6
2022																
Jan	346,619.5	43,438.8	31,158.1	421,216.4	2,962.5	3,864.8	428,043.7	2,995.6	14,406.9	2,688.6	1,043.2	230.5	122,752.1	53,627.8	58,853.6	684,641.9
Feb	358,979.4	51,510.7	38,313.7	448,803.8	3,229.3	4,248.7	456,281.8	3,834.1	16,267.7	2,120.4	1,338.1	226.8	130,981.3	55,099.6	68,847.8	734,997.5
Mar	422,934.6	58,283.5	42,258.5	523,476.6	3,062.7	5,171.3	531,710.2	3,850.2	18,374.8	2,137.9	2,779.1	810.6	149,781.8	65,660.6	85,216.5	860,321.7
Apr	479,558.7	74,880.3	40,491.0	594,930.0	3,677.5	7,486.7	608,794.2	3,792.3	21,445.6	2,173.0	3,173.0	486.8	149,610.1	53,372.3	103,623.7	946,471.1
May	666,937.8	137,419.9	55,389.8	859,747.5	7,310.9	7,249.8	874,308.3	5,769.3	39,105.1	2,383.3	2,207.5	321.8	214,978.6	134,993.5	182,638.3	1,456,705.7
Jun	773,692.7	154,956.9	63,511.7	992,161.3	4,597.1	10,018.0	1,006,776.4	6,743.2	42,701.8	2,898.5	3,389.3	345.2	307,341.8	169,511.8	184,958.1	1,724,666.1
Jul	810,906.6	173,134.0	74,324.5	1,058,365.1	717.0	9,153.8	1,068,235.9	7,994.5	54,168.7	2,814.9	2,948.9	1,339.1	355,597.9	144,090.2	220,013.9	1,857,204.0
Aug	1,100,922.1	219,798.6	110,595.1	1,431,315.7	790.2	7,675.2	1,439,781.1	12,484.6	64,160.3	3,230.7	2,791.8	555.2	421,880.4	167,029.4	300,169.0	2,412,082.6
Sep	1,328,584.6	256,980.2	127,051.1	1,712,616.0	1,482.9	8,473.0	1,722,571.9	13,789.2	81,182.4	3,720.2	5,632.9	587.2	465,063.9	146,133.1	318,269.0	2,756,949.8
Oct	1,365,908.5	205,688.8	128,186.9	1,699,784.2	813.8	6,314.3	1,706,912.3	14,933.2	83,998.0	28,072.2	4,282.4	762.5	486,396.6	165,306.9	407,015.5	2,897,679.6
Nov	1,481,503.5	243,239.9	146,530.0	1,871,273.4	291.3	6,366.6	1,877,931.3	12,665.1	67,318.9	19,973.5	5,349.1	339.6	514,200.0	170,944.8	343,815.1	3,012,537.3
Dec	1,697,008.7	235,271.2	181,090.6	2,113,370.5	1,514.4	7,399.5	2,122,284.4	13,296.8	106,071.5	10,597.8	9,610.4	752.5	621,113.3	159,126.2	320,981.8	3,363,834.8
2023																
Jan	2,139,458.0	78,197.7	215,537.0	2,433,192.7	214.3	41,333.8	2,474,740.8	12,923.7	123,605.0	4,974.3	5,669.1	675.5	723,452.2	227,545.4	384,228.1	3,957,814.2
Feb	1,997,073.4	398,595.8	230,549.9	2,626,219.1	303.5	10,655.7	2,637,178.4	14,443.3	140,484.9	8,092.9	13,273.6	3,109.0	780,290.7	226,933.0	497,618.5	4,321,424.2
Mar	2,218,678.7	384,245.5	262,119.8	2,865,044.1	1,272.8	5,953.0	2,872,269.9	15,181.9	166,322.5	9,639.9	15,494.1	3,714.6	846,479.9	554,840.9	581,230.2	5,065,173.9
Apr	2,646,522.9	382,678.9	197,662.2	3,226,864.0	173.4	9,463.7	3,236,501.1	1,115.5	201,674.1	13,321.9	21,331.0	6,418.8	935,402.2	214,270.9	584,658.1	5,214,693.6
May	5,196,712.7	969,812.4	435,965.9	6,602,490.9	514.9	50,270.4	6,653,276.3	1,287.6	493,894.8	78,332.6	65,967.5	30,583.3	1,815,309.9	607,438.1	1,452,822.8	11,198,912.9
Jun	10,038,744.6	2,287,818.9	789,112.9	13,115,676.4	1,468.6	432,367.0	13,549,512.0	1,177.5	1,201,797.0	39,166.6	101,465.7	64,321.9	5,042,026.4	1,390,786.2	2,830,837.1	24,221,090.2
Jul	9,592,825.0	1,787,488.9	592,115.4	11,972,429.2	9,138.5	380,190.7	12,361,758.4	512.4	847,658.7	87,827.2	146,299.0	58,256.2	4,649,856.9	829,382.3	2,509,565.1	21,491,116.1
Aug	9,698,801.3	1,920,804.2	622,360.9	12,241,966.5	1,479.8	381,277.2	12,624,723.5	863.9	865,945.4	84,841.4	141,305.4	56,751.6	4,465,099.7	701,626.2	2,553,598.8	21,494,755.8
Sep	13,388,822.1	319,686.0	695,555.0	14,404,063.1	4,754.8	114,251.5	14,523,069.4	504.3	1,036,635.6	82,493.4	152,779.3	90,032.4	5,159,376.7	776,997.6	2,972,007.2	24,793,895.8
Oct	14,087,303.5	312,655.9	827,902.5	15,227,861.9	1,692.7	146,801.2	15,376,355.8	522.9	1,106,440.5	84,628.9	159,670.3	83,441.8	5,427,255.6	958,746.4	2,946,119.7	26,143,181.7
Nov	14,816,672.7	306,014.4	882,972.1	16,005,659.2	5,789.4	133,219.7	16,144,668.4	432.3	1,259,039.0	92,939.9	227,935.0	89,997.7	5,701,702.0	1,046,257.0	3,234,709.9	27,797,681.2
Dec	15,726,758.6	369,405.4	808,422.2	16,904,586.1	6,923.3	201,225.8	17,112,735.3	36,808.0	1,314,667.6	55,157.4	153,701.6	138,722.6	6,264,918.7	1,184,706.9	3,575,604.1	29,837,022.2
2024																
Jan	24,824,665.8	662,989.2	1,191,915.8	26,679,570.7	25,881.9	169,368.5	26,874,821.1	168.2	2,102,990.2	114,298.0	279,174.1	182,727.0	9,532,603.9	1,949,662.4	5,652,947.5	46,689,392.4
Feb	34,081,030.9	911,544.4	1,983,870.0	36,976,445.3	7,146.9	340,314.0	37,323,906.2	151.1	3,106,432.1	105,237.1	449,118.3	279,727.9	13,237,287.6	2,608,075.1	8,386,836.6	65,496,772.2
Mar	48,600,783.9	1,434,256.6	3,333,658.9	53,368,699.4	104,688.2	515,299.7	53,988,687.3	0.0	4,654,985.7	95,705.0	500,611.7	361,061.7	20,221,996.6	2,860,196.6	10,814,535.9	93,497,780.6
*Apr	31,998.9	843.3	1,944.9	34,787.2	92.9	242.8	35,122.9	0.0	2,867.4	67.4	358.1	222.7	10,281.8	2,510.2	8,387.7	59,818.1
*May	33,721.9	910.6	2,242.3	36,874.7	79.3	349.9	37,303.9	0.0	3,056.1	50.9	436.0	4.6	12,101.9	2,114.7	8,699.7	63,767.8

Source: Reserve Bank of Zimbabwe, 2024

*Statistics are denominated in ZiG

TABLE 6.1: BUILDING SOCIETIES -ASSETS
ZWL\$ millions

End of	Bond Notes & Coins	Foreign Notes & Coin	Balances with RBZ	Balances with Other Depository Corporations	Balances with Foreign Banks	Other Claims on Non-residents	Debt Securities				Loans and Advances			Other Assets	Non Financial Assets	TOTAL
							Government ¹ Securities	Local Government securities	Public Enterprises	Other ²	Mortgages	Government	Other			
2021																
Jan	188.7	2943.3	5,986.5	793.8	843.5	-	1,783.8	10.2	-	211.3	1,091.3	0.0	9,329.1	2980.3	7,685.1	33,846.9
Feb	345.7	2762.9	6,004.8	811.1	984.2	-	2,731.0	9.2	-	236.8	2,089.3	-	8,950.2	2949.2	7,790.6	35,665.0
Mar	168.3	2278.9	6,313.1	1594.4	1,028.2	-	1,341.7	8.4	-	415.1	1,242.4	-	10,867.7	3027.5	7,841.0	36,126.8
Apr	206.9	2702.1	5,302.6	1156.7	1,085.4	-	871.7	7.7	-	508.9	1,581.5	-	14,233.6	3431.1	7,237.9	38,326.2
May	210.3	1687.6	5,962.2	1250.9	3,847.1	-	116.9	7.0	-	517.7	1,568.8	-	17,154.9	2927.9	7,532.9	42,784.2
Jun	249.6	1649.7	6,202.6	1163.8	1,866.7	-	204.6	6.5	-	588.0	1,851.9	-	18,795.4	2580.9	7,701.1	42,860.7
Jul	283.7	1212.2	7,193.4	1892.7	1,875.4	-	1,143.4	6.0	-	447.3	1,963.2	-	18,280.3	3923.5	7,695.6	45,916.5
Aug	352.8	1408.8	7,869.3	2537.6	2,316.2	-	3,535.6	5.4	-	399.5	2,101.3	-	19,422.2	3837.6	7,666.6	51,453.0
Sep	349.8	1926.6	7,608.5	2430.2	1,941.4	-	4,314.6	5.1	-	205.2	2,231.7	-	20,461.1	4013.2	9,460.7	54,948.1
Oct	411.5	2396.2	8,221.0	2162.4	3,421.5	-	5,627.7	4.3	-	271.1	2,539.5	-	22,881.3	5432.3	9,501.3	62,870.1
Nov	339.8	3578.4	7,561.6	2568.8	2,299.5	-	5,882.7	3.7	-	566.4	2,788.5	-	27,326.1	4400.3	9,614.3	66,930.0
Dec	351.1	3217.3	8,557.8	2619.2	3,620.2	-	2,353.6	3.0	-	1,189.0	2,786.9	-	33,115.3	5610.8	11,334.1	74,758.3
2022																
Jan	324.6	3504.3	8,506.5	2680.3	2,631.0	-	1,110.8	2.4	-	1,487.3	2,967.6	-	35,913.5	6693.8	14,008.7	79,830.9
Feb	411.5	4021.5	9,763.6	3069.7	5,678.0	-	4,048.9	1.6	-	1,465.4	3,241.1	-	39,977.5	4511.5	13,964.4	90,154.6
Mar	354.3	4413.6	11,882.6	3691.3	4,932.3	-	5,235.0	0.9	-	1,590.0	3,888.3	-	42,741.3	9086.6	15,421.2	103,237.4
Apr	546.4	3054.1	15,585.8	4857.7	5,768.6	-	5,714.4	0.2	-	1,861.4	4,143.7	-	48,582.4	9654.2	16,999.2	116,768.1
May	639.5	8326.7	23,817.6	4251.9	16,001.6	-	6,150.9	0.0	-	1,486.3	8,474.8	-	74,864.0	14793.9	17,091.2	175,898.5
Jun	418.5	8464.3	32,497.6	3807.5	21,184.8	-	2,639.3	0.0	-	1,340.0	10,851.1	-	85,145.9	18155.8	35,128.1	219,633.0
Jul	700.4	9914.6	30,660.3	4983.4	24,902.9	-	4,077.6	0.0	-	1,411.5	13,722.1	-	98,066.0	9998.6	45,127.9	243,565.1
Aug	863.8	14422.1	33,703.2	4483.0	34,971.8	-	4,379.8	0.0	-	2,106.6	16,515.4	-	115,491.9	8745.3	45,694.0	281,377.1
Sep	1,086.8	14998.2	37,911.3	7470.1	45,094.8	-	8,440.8	0.0	-	1,302.8	17,996.8	-	129,242.7	11630.7	60,830.4	336,005.2
Oct	1,158.3	14768.7	44,296.5	10013.7	44,664.1	-	14,109.9	0.0	-	1,142.4	16,817.7	-	123,793.8	30036.4	47,678.2	348,479.7
Nov	1,449.3	22456.9	41,398.0	9771.8	41,317.6	-	17,572.6	0.0	-	2,085.3	16,785.8	-	136,029.9	30694.0	46,275.8	365,836.9
Dec	1,470.7	23012.7	48,533.8	8913.7	50,229.0	-	21,411.1	0.0	19,993.4	2,176.2	17,693.7	-	119,322.3	39279.1	69,102.5	421,138.1
2023																
Jan	2,402.7	32405.1	47,062.6	8410.8	50,364.6	-	17,976.2	0.0	23,668.5	2,406.3	18,311.0	-	132,757.4	41367.4	69,570.1	446,702.8
Feb	234.9	59685.4	50,103.0	9568.6	62,701.4	889.9	24,809.7	0.0	26,667.1	4,451.9	21,629.1	-	146,798.4	50093.6	70,987.9	528,620.9
Mar	214.6	72311.9	57,399.6	9196.8	51,300.9	-	28,841.5	0.0	24,689.0	5,503.9	19,118.6	-	170,376.6	54524.7	84,489.1	577,967.3
Apr	184.1	61341.6	63,129.5	16343.2	61,444.0	-	28,727.0	0.0	28,119.0	5,989.2	27,619.9	-	205,412.2	81442.9	86,571.2	666,323.9
May	78.1	125685.1	100,808.7	22707.0	195,646.6	-	81,344.3	0.0	69,908.9	6,246.8	53,180.7	-	440,462.4	103176.1	116,103.7	1,315,348.2
Jun	176.6	227001.8	172,666.5	25998.2	452,772.6	40,326.7	115,193.3	0.0	196,310.3	4,209.5	121,677.5	-	870,075.1	230604.4	544,587.8	3,001,600.3
Jul	162.7	132017.2	220,995.0	20797.2	459,668.2	32,010.8	105,308.6	0.0	154,472.7	13,777.8	153,638.5	-	697,177.8	209734.6	612,937.8	2,812,698.9
Aug	611.0	105296.6	309,821.7	55744.7	475,838.3	37,447.1	102,495.2	0.0	153,578.2	6,767.5	135,193.3	-	758,439.2	223114.4	564,622.1	2,928,969.2
Sep	949.3	193065.6	339,269.2	41680.1	437,996.0	58,554.5	110,351.3	0.0	161,346.6	4,522.1	153,113.7	-	880,148.8	290026.7	565,616.4	3,236,640.3
Oct	403.8	204713.4	254,684.1	187632.1	440,150.3	65,022.1	97,046.1	0.0	176,111.9	13,771.8	173,523.5	-	829,479.5	345029.3	586,015.6	3,373,583.5
Nov	370.5	222344.7	387,213.2	160896.0	326,510.1	50,688.3	159,225.4	0.0	173,990.9	28,127.2	187,363.3	-	926,663.7	395549.5	595,811.6	3,614,754.5
Dec	403.7	251968.8	457,034.9	261067.9	345,348.0	56,551.7	185,131.1	0.0	166,902.0	27,875.9	222,503.1	0.7	973,788.6	507890.9	658,045.7	4,114,512.9
2024																
Jan	367.9	368046.7	524,020.9	471915.0	363,325.6	40,412.9	280,803.2	0.0	280,441.0	45,935.9	339,610.7	-	1,563,405.5	649087.4	742,734.0	5,670,106.8
Feb	578.8	637645.2	797,581.2	618074.6	613,309.7	24,680.4	425,783.2	0.0	399,313.5	67,900.2	519,513.4	-	2,188,186.8	904519.6	937,957.6	8,135,044.1
Mar	356.6	1026840.5	1,171,941.4	888362.3	829,470.4	-	440,943.8	0.0	528,820.5	103,276.3	787,872.2	-	3,761,909.8	1403556.4	1,697,667.5	12,641,017.5
*Apr	1.0	564.4	864.1	693.0	326.5	67.2	337.2	0.0	313.5	-	593.2	212.7	2,856.8	420.1	824.2	8,074.0
*May	4.0	639.2	783.2	772.6	296.2	109.6	407.6	0.0	303.7	-	309.2	19.8	2,946.5	712.1	903.7	8,207.5

Source: Reserve Bank of Zimbabwe, 2024

Notes

1. Government securities include treasury bills and bonds
2. Includes bankers acceptances, discounted bills and negotiable certificates of deposits.
3. Includes households, other financial corporations.

* Statistics are denominated in ZiG

TABLE 6.2: BUILDING SOCIETIES -LIABILITIES

ZWLS millions

End of							Debt Securities	Foreign Liabilities	Amounts Owing to			Capital and Reserves	Other Liabilities	TOTAL
	Savings	Time Deposits	Total Deposits from the public	Other Depository Corporations	Government	Total			RBZ	Other Depository Corporations	Other Financial Corporations			
2021														
Jan	17,060.5	985.1	18,045.7	150.0	15.0	18,210.7	291.2	3,018.1	0.0	81.3	0.0	6,054.0	6,191.6	33,846.9
Feb	18,610.7	1,047.5	19,658.2	150.0	15.0	19,823.2	318.2	3,075.5	0.0	40.7	0.0	6,533.5	5,874.0	35,665.0
Mar	18,562.7	1,070.5	19,633.2	150.0	15.0	19,798.2	320.8	3,377.0	0.0	241.5	0.0	6,727.5	5,661.8	36,126.8
Apr	19,021.2	1,353.2	20,374.5	500.0	15.0	20,889.5	325.0	4,244.8	0.0	181.9	0.0	6,267.0	6,418.0	38,326.2
May	22,332.1	1,453.5	23,785.6	500.0	15.0	24,300.6	350.2	4,279.9	0.0	394.8	0.0	6,067.1	7,391.6	42,784.2
Jun	22,784.4	1,675.4	24,459.8	209.5	70.5	24,739.8	359.1	3,855.1	0.0	570.4	0.0	6,623.0	6,713.2	42,860.7
Jul	25,425.9	1,997.8	27,423.7	25.0	15.0	27,463.7	365.2	3,488.6	0.0	274.6	0.0	7,194.2	7,130.1	45,916.5
Aug	27,475.7	2,728.9	30,204.6	60.0	15.0	30,279.6	668.2	5,344.8	0.0	621.9	0.0	7,683.7	6,854.8	51,453.0
Sep	29,023.8	2,834.6	31,858.5	76.0	15.2	31,949.7	1,062.2	4,465.7	0.0	181.9	0.0	10,227.1	7,061.5	54,948.1
Oct	30,925.8	4,239.0	35,164.7	0.0	30.0	35,194.8	1,329.1	7,432.5	0.0	0.0	0.0	10,906.3	8,007.4	62,870.1
Nov	34,486.8	4,344.1	38,830.8	0.0	15.0	38,845.9	1,149.7	7,028.7	0.0	203.6	0.0	11,575.7	8,126.5	66,930.0
Dec	33,974.4	4,856.8	38,831.3	80.0	15.0	38,926.3	1,750.9	9,746.8	0.0	712.0	0.0	15,101.8	8,520.4	74,758.3
2022														
Jan	31,695.1	5,983.6	37,678.7	0.0	15.0	37,693.7	1,771.4	10,991.6	0.0	373.7	0.0	18,063.5	10,937.0	79,830.9
Feb	37,132.1	7,089.1	44,221.1	0.0	15.0	44,236.1	1,703.8	14,215.9	0.0	431.6	0.0	18,241.5	11,325.7	90,154.6
Mar	44,187.4	6,190.7	50,378.1	0.0	15.0	50,393.1	1,742.3	15,620.9	0.0	501.9	0.0	20,548.8	14,430.4	103,237.4
Apr	52,979.2	6,553.0	59,532.2	0.0	15.0	59,547.2	1,536.3	17,027.1	0.0	704.1	0.0	23,099.0	14,854.4	116,768.1
May	86,411.7	6,683.0	93,094.7	0.0	15.0	93,109.8	1,477.7	34,306.7	0.0	1,033.4	0.0	22,645.2	23,325.7	175,898.5
Jun	98,008.7	8,427.1	106,435.9	1,030.1	15.0	107,481.1	1,496.4	40,346.3	0.0	1,200.6	0.0	42,213.2	26,895.5	219,633.0
Jul	111,583.1	9,489.2	121,072.3	1,072.6	15.0	122,159.9	1,225.0	46,145.1	0.0	2,071.5	0.0	55,131.6	16,832.0	243,565.1
Aug	133,071.2	11,398.3	144,469.5	1,625.2	15.0	146,109.7	1,382.6	55,691.4	0.0	2,979.3	0.0	60,157.4	15,056.7	281,377.1
Sep	143,338.6	28,284.7	171,623.3	0.0	15.0	171,638.3	1,339.9	62,659.9	0.0	3,613.8	0.0	79,343.1	17,410.1	336,005.2
Oct	122,775.3	20,897.6	143,672.9	1,214.2	15.0	144,902.1	1,707.3	69,651.9	0.0	4,327.9	0.0	86,799.2	41,091.4	348,479.7
Nov	130,892.9	23,401.5	154,294.3	1,256.4	13.0	155,563.7	1,855.1	72,052.0	0.0	5,140.0	0.0	89,895.0	41,331.2	365,836.9
Dec	149,207.3	30,517.1	179,724.4	1,239.7	103.8	181,068.0	1,933.7	71,142.6	0.0	5,623.9	0.0	118,486.1	42,883.8	421,138.1
2023														
Jan	161,506.8	31,099.4	192,606.2	1,462.2	121.0	194,189.4	3,214.4	72,524.5	0.0	6,622.6	0.0	144,335.3	25,816.5	446,702.8
Feb	210,739.4	27,500.2	238,239.5	1,153.4	15.0	239,407.9	2,349.9	84,724.5	0.0	7,548.9	0.0	155,007.6	39,582.0	528,620.9
Mar	234,480.2	38,088.7	272,568.9	158.0	14.4	272,741.2	1,982.4	89,883.4	0.0	7,502.7	0.0	172,499.0	33,358.6	577,967.3
Apr	272,738.9	35,889.2	308,628.0	400.0	15.0	309,043.1	1,809.5	116,418.1	0.0	8,456.9	0.0	183,262.3	47,334.0	666,323.9
May	502,897.5	36,680.3	539,577.9	553.7	15.0	540,146.6	4,453.5	289,636.2	0.0	8,115.4	0.0	372,206.8	100,789.6	1,315,348.2
Jun	927,980.2	66,404.1	994,384.3	0.0	15.0	994,399.3	4,147.7	631,544.2	0.0	10,873.2	0.0	1,117,122.1	243,513.7	3,001,600.3
Jul	804,547.2	73,047.1	877,594.3	15,753.2	15.0	893,362.6	2,706.7	611,248.0	0.0	14,397.5	0.0	1,093,858.2	197,126.1	2,812,698.9
Aug	920,687.4	90,856.7	1,011,544.1	15,752.3	15.0	1,027,311.4	3,400.5	617,162.9	0.0	12,854.9	0.0	1,064,286.3	203,953.2	2,928,969.2
Sep	1,062,730.1	75,413.9	1,138,143.9	0.0	15.1	1,138,159.0	3,262.9	652,356.6	0.0	16,101.5	0.0	1,117,548.2	309,212.1	3,236,640.3
Oct	1,261,965.8	64,282.0	1,326,247.8	0.0	15.1	1,326,262.9	4,056.0	467,416.6	0.0	16,785.2	0.0	1,188,499.5	370,563.3	3,373,583.5
Nov	1,301,463.8	82,076.9	1,383,540.7	79,497.1	15.1	1,463,052.8	4,822.5	525,114.1	0.0	16,180.1	0.0	1,209,652.3	395,932.7	3,614,754.5
Dec	1,541,238.9	142,705.5	1,683,944.4	79,497.1	15.8	1,763,457.2	7,085.0	516,718.0	0.0	8,736.3	0.0	1,308,419.6	510,096.7	4,114,512.9
2024														
Jan	2,094,039.4	96,896.2	2,190,935.6	79,481.7	15.1	2,270,432.3	8,231.4	904,697.2	0.0	11,028.7	0.0	1,826,995.6	648,721.6	5,670,106.8
Feb	2,991,430.0	192,203.3	3,183,633.2	162,422.1	15.1	3,346,070.4	10,388.9	1,314,901.6	0.0	5,723.7	0.0	2,630,626.9	827,332.6	8,135,044.1
Mar	4,958,662.0	186,068.5	5,144,730.5	162,239.8	15.7	5,306,986.0	8,072.5	1,880,803.3	0.0	6,134.8	0.0	4,286,906.8	1,152,114.2	12,641,017.5
*Apr	3,369.4	36.3	3,405.6	65.0	0.0	3,470.7	3.2	1,258.6	0.0	0.0	0.0	1,955.9	1,385.6	8,074.0
*May	3,228.4	75.2	3,303.7	0.0	0.0	3,303.7	4.8	1,366.6	0.0	0.0	0.0	2,496.7	1,035.8	8,207.5

Source: Reserve Bank of Zimbabwe, 2024

* Statistics are denominated in ZiG

TABLE 7.1 : SECTORAL ANALYSIS OF COMMERCIAL BANKS LOANS AND ADVANCES

\$ ('000)

END OF	AGRICULTURE	CONSTRUCTION	COMMUNICATION	DISTRIBUTION	FINANCIAL & INVESTMENTS	FINANCIAL ORGANISATIONS	MANUFACTURING	MINING	SERVICES	TRANSPORT	INDIVIDUALS	CONGLOMERATES	TOTAL
2020													
Jan	4,084,551.94	155,581.93	40,879.89	1,241,096.72	54,212.81	1,614,135.86	1,136,124.87	905,568.16	799,835.71	83,887.62	1,594,904.42	3,435.36	11,714,215.29
Feb	4,492,412.28	157,892.05	54,850.75	1,305,056.27	51,575.18	1,667,015.97	1,328,895.13	875,096.28	827,340.38	103,240.64	1,837,059.21	1,195.35	12,701,629.50
Mar	5,400,573.75	137,553.14	109,432.30	1,355,737.76	60,656.39	2,181,804.45	1,514,365.26	1,743,391.37	911,567.97	129,647.77	2,083,395.02	30,866.95	15,658,992.12
Apr	5,497,243.24	144,302.16	94,782.20	1,298,701.43	50,563.13	2,200,545.77	1,762,996.43	1,756,962.25	1,057,031.75	149,805.94	2,211,133.89	33,524.86	16,257,593.05
May	6,753,987.64	152,161.11	176,776.32	1,688,453.47	61,403.01	2,272,323.33	2,155,232.06	2,018,291.52	1,335,664.72	161,892.59	2,646,269.59	56,873.34	19,479,328.70
Jun	8,233,748.36	178,010.08	127,961.90	3,248,219.37	64,989.86	5,469,986.07	3,799,659.67	4,379,017.69	1,983,339.32	277,602.32	3,665,408.84	46,384.96	31,474,328.45
Jul	8,927,920.73	256,440.30	209,123.91	4,249,101.81	34,055.90	7,106,442.23	5,125,740.57	5,385,837.14	2,413,677.93	418,160.11	4,321,918.71	46,630.64	38,495,049.96
Aug	9,773,178.50	269,675.36	194,537.60	5,470,092.50	33,043.10	7,946,261.68	6,723,930.20	5,651,838.11	2,103,883.15	446,084.37	48,922,444.22	44,630.64	44,952,547.19
Sep	10,508,860.18	202,928.95	203,610.78	4,810,727.31	29,975.80	1,041,079.17	7,136,261.66	4,099,760.81	3,255,496.85	517,871.73	6,526,576.15	48,754.08	38,381,903.47
Oct	12,296,430.45	302,589.49	251,238.66	9,053,118.05	28,434.20	8,136,185.80	6,305,609.42	6,351,785.61	3,855,757.60	649,444.55	7,243,034.96	49,339.03	54,522,967.83
Nov	14,705,718.28	553,426.67	299,226.19	10,178,453.66	26,676.82	9,457,279.18	7,442,871.42	6,834,160.25	4,193,059.76	959,134.44	7,919,442.36	50,802.65	62,620,251.69
Dec	19,070,900.24	557,071.84	265,529.08	10,043,351.16	24,925.66	9,451,197.42	8,214,424.44	7,599,398.94	4,750,996.82	1,556,410.92	9,213,845.68	46,489.85	70,794,542.04
2021													
Jan	23,978,167.35	610,696.11	267,400.20	9,997,383.02	66,046.86	9,811,097.63	7,641,910.42	7,176,322.97	4,807,054.16	1,685,871.14	10,092,630.46	47,525.58	76,182,105.93
Feb	24,581,772.22	653,205.48	285,830.69	10,330,772.00	65,231.37	10,024,935.09	7,949,013.06	6,754,180.16	5,018,015.84	1,766,077.92	10,905,948.39	47,678.08	78,382,660.29
Mar	28,741,816.74	737,140.48	320,102.45	10,604,119.56	76,828.95	10,517,753.11	9,428,559.85	8,179,722.05	5,701,289.52	1,822,019.95	12,528,176.45	33,915.52	88,691,444.62
Apr	31,859,146.34	675,080.87	347,881.04	12,101,683.31	205,760.21	12,046,268.54	10,788,214.39	8,802,924.25	6,559,969.13	1,831,534.43	14,724,055.16	36,984.33	99,979,501.99
May	34,645,328.64	713,518.48	292,339.75	13,012,546.01	70,347.70	10,160,360.67	11,287,317.39	8,318,871.52	7,438,997.57	1,831,015.12	17,169,532.74	10,879.19	104,951,054.78
Jun	36,527,537.18	995,308.60	357,200.72	14,622,859.32	69,173.21	12,832,747.32	12,635,012.94	7,938,660.25	9,226,503.32	1,903,845.82	19,986,300.49	40,765.72	117,133,914.90
Jul	39,160,305.59	1,280,558.68	411,253.92	16,562,010.52	62,624.82	13,792,648.82	12,583,048.87	8,567,557.82	10,717,151.04	1,820,088.91	22,581,130.29	13,756.78	127,552,136.06
Aug	41,218,056.27	1,372,177.00	431,669.10	15,667,033.13	66,504.42	14,701,546.35	13,446,660.94	8,828,791.19	11,500,069.82	1,942,139.38	27,299,685.30	15,470.31	134,689,803.20
Sep	41,133,553.69	1,649,182.17	433,781.15	16,702,896.26	321,991.18	15,183,417.18	15,271,161.92	9,065,558.07	11,973,442.27	2,145,369.49	30,851,901.80	19,863.23	144,752,118.41
Oct	48,491,758.71	1,644,045.10	477,340.76	20,072,721.66	337,273.51	16,644,705.00	17,906,042.38	10,150,149.70	8,544,940.34	2,418,354.85	35,641,091.07	17,894.63	162,346,317.71
Nov	48,945,526.55	1,598,923.06	394,575.79	20,998,777.03	434,931.56	16,621,266.44	19,372,274.14	10,802,887.56	8,904,904.88	2,882,220.06	40,009,482.19	18,275.25	170,984,044.50
Dec	54,028,791.83	1,778,880.47	556,046.62	24,450,917.17	570,685.08	10,955,470.21	22,025,406.62	10,538,491.23	14,437,886.10	2,996,425.00	43,047,088.39	29,601.16	185,415,689.87
2022													
Jan	58,163,723.79	2,180,551.47	576,438.12	26,576,517.70	366,231.45	8,887,534.55	23,074,734.84	11,840,524.88	15,743,736.46	3,516,259.69	47,325,078.28	29,564.68	198,280,695.90
Feb	59,500,669.71	2,289,260.81	618,640.14	27,925,301.74	441,435.03	8,279,886.67	27,976,121.59	13,027,815.12	20,505,827.49	3,747,288.27	51,007,737.28	19,627.22	216,630,676.11
Mar	66,551,117.83	2,538,377.08	656,335.46	29,688,979.74	660,584.49	10,903,917.10	32,629,411.27	15,688,496.07	38,075,386.72	4,471,441.45	58,500,950.68	802,168.34	261,167,166.58
Apr	74,441,781.12	4,219,500.30	1,441,218.07	33,136,441.44	673,885.92	13,157,288.43	34,426,878.27	18,261,710.29	39,043,359.76	5,001,307.17	63,176,517.60	40,089.64	287,019,974.16
May	101,753,100.08	5,120,524.84	3,358,419.20	50,514,059.33	760,401.23	12,433,390.50	42,057,624.50	28,724,818.35	48,088,662.73	6,286,840.17	76,655,600.16	34,456.76	375,787,897.73
Jun	118,753,588.99	6,209,658.53	2,293,665.50	64,942,949.99	869,273.19	23,897,585.00	58,442,367.18	37,195,284.13	62,467,707.84	9,414,912.48	96,536,183.00	43,204.15	481,066,380.70
Jul	133,779,414.05	7,610,614.14	3,684,426.07	77,836,080.20	938,367.98	30,537,997.95	69,408,788.72	46,181,587.44	72,642,938.51	10,449,582.09	111,094,524.49	46,145.73	564,210,467.80
Aug	165,210,571.41	10,163,176.69	2,624,492.88	93,899,073.61	1,266,729.80	39,544,245.28	87,691,102.84	58,330,938.20	97,552,420.83	13,625,765.29	154,457.59	698,513,481.52	698,513,481.52
Sept	201,167,878.53	11,330,918.80	5,038,300.39	110,956,484.03	1,297,748.50	46,492,682.69	101,816,518.33	92,708,096.37	88,483,494.42	11,685,667.87	152,934,863.30	276,752.34	822,189,405.58
Oct	223,506,677.74	12,026,669.50	4,229,873.27	113,451,159.15	1,302,041.27	44,399,745.17	110,333,025.84	79,715,558.05	89,501,330.53	9,611,322.30	175,816,703.56	178,607.79	866,072,714.17
Nov	232,953,535.08	16,431,625.92	11,131,139.79	118,284,970.84	1,687,527.03	42,192,397.26	124,017,335.43	75,874,234.73	94,636,395.62	12,440,947.33	207,085,835.54	197,473.26	936,933,417.83
Dec	253,185,165.18	19,199,455.89	10,466,455.02	135,037,685.07	1,551,994.21	70,805,600.30	136,576,579.60	94,115,141.69	123,404,532.09	12,079,018.68	235,371,108.06	173,717.07	1,091,966,452.83
2023													
Jan	299,237,745.06	22,096,826.86	11,001,194.94	154,399,125.00	2,073,794.79	72,677,263.10	165,905,496.48	124,259,994.28	140,303,195.37	16,560,714.33	290,446,774.71	286,968.13	1,299,249,093.07
Feb	333,081,520.85	26,349,752.54	12,607,980.80	168,969,321.35	3,232,834.66	79,874,665.83	198,087,465.13	146,996,948.44	150,078,778.01	18,960,512.94	335,439,856.49	415,659.47	1,474,095,296.50
Mar	411,138,419.07	28,795,432.59	14,081,946.71	184,250,094.21	3,256,927.22	101,507,881.47	232,125,042.77	168,374,643.67	159,301,093.17	20,786,447.06	364,183,808.40	229,595.47	1,688,031,331.80
Apr	411,638,425.58	28,865,765.48	14,081,964.65	184,833,219.66	3,256,927.22	101,507,881.47	235,076,590.94	168,374,757.64	159,310,920.52	20,785,827.18	365,366,760.50	229,595.47	1,693,328,636.32
May	726,348,772.35	78,828,771.47	44,800,380.00	409,618,602.87	6,584,930.07	226,467,642.46	583,387,051.30	480,909,418.46	381,628,891.53	62,593,512.49	757,858,742.61	267,815.39	3,759,254,531.01
Jun	1,385,380,571.66	173,918,051.54	114,682,839.69	1,119,448,698.19	23,922,347.39	571,712,604.71	1,309,324,347.94	1,111,326,640.14	808,734,970.18	129,722,475.73	1,754,989,459.01	444,788.00	8,503,607,794.19
Jul	1,088,372,491.59	132,529,236.30	101,023,084.21	843,805,813.72	21,291,030.44	370,922,779.80	1,037,949,287.43	824,419,001.65	646,244,001.65	87,491,103.55	1,451,125,105.58	356,098.86	6,605,529,095.13
Aug	1,104,126,310.49	133,512,317.72	105,426,999.17	683,402,044.93	21,345,225.83	393,145,008.06	1,077,529,295.35	824,970,068.56	85,309,683.35	1,543,461,599.29	382,505.35	6,689,249,344.42	6,689,249,344.42
Sep	1,336,413,273.00	158,136,405.58	121,080,865.90	752,199,791.20	28,592,532.70	465,470,715.50	1,334,020,478.90	1,012,670,250.70	799,826,458.00	1,022,388,002.60	1,857,297,850.00	586,991.00	7,689,533,615.50
Oct	1,461,090,986.48	163,948,853.90	120,153,516.74	935,064,277.07	24,681,183.18	520,361,008.99	1,381,206,351.23	1,092,469,043.71	859,550,943.15	119,799,556.91	2,126,512,435.00	627,911.82	8,804,466,568.16
Nov	1,397,804,072.50	171,337,302.47	117,526,650.42	1,017,731,862.93	26,161,720.05	535,490,380.99	1,401,587,612.93	992,371,783.17	885,248,				

TABLE 7.2: SECTORAL ANALYSIS OF COMMERCIAL BANKS DEPOSITS

(\$ '000)

END OF	AGRICULTURE	CONSTRUCTION	COMMUNICATIONS	DISTRIBUTION	FINANCIAL & INVESTMENTS	FINANCIAL ORGANISATIONS	MANUFACTURING	MINING	SERVICES	TRANSPORT	INDIVIDUALS	CONGLOMERATES	TOTAL
												1,000.00	
2020													
Jan	2,173,633.03	972,609.19	3,182,087.13	4,279,565.75	1,757,297.12	4,791,990.63	2,791,625.15	2,223,774.14	9,875,803.48	609,781.65	2,838,775.94	81,735.21	35,578,678.43
Feb	2,492,591.77	1,191,731.68	3,340,863.80	8,721,475.95	1,919,428.47	5,869,104.19	3,481,495.51	6,279,161.98	10,202,203.60	760,155.34	3,574,134.47	82,845.83	44,365,192.59
Mar	2,678,262.66	1,449,645.90	3,231,058.97	11,715,273.88	2,114,093.03	6,507,000.01	4,576,971.82	3,048,053.49	11,490,205.21	947,918.17	4,257,117.74	72,082.86	52,087,683.73
Apr	2,854,374.82	1,118,295.51	3,492,330.52	5,271,473.36	1,999,901.13	6,191,170.71	4,276,817.19	3,727,579.43	14,060,717.80	713,406.98	4,444,924.89	83,109.30	48,234,101.64
May	3,866,781.11	1,163,944.89	4,713,727.59	7,932,403.43	1,991,042.58	7,151,451.48	5,858,495.15	5,031,912.53	13,907,794.76	944,318.05	5,060,401.34	88,613.61	57,710,886.51
Jun	7,228,784.40	1,963,030.85	5,393,404.53	14,526,855.63	3,997,135.72	12,452,202.49	11,386,156.55	9,507,719.09	22,807,615.50	1,630,544.88	9,798,261.20	121,561.20	100,813,272.04
Jul	9,091,726.77	2,629,847.13	6,043,418.97	19,096,889.49	4,988,887.74	15,446,649.70	15,274,687.36	7,918,819.51	31,916,392.56	2,035,354.71	15,762,315.16	147,865.97	130,532,855.06
Aug	9,462,082.74	2,865,950.88	6,582,519.60	19,234,703.99	5,333,846.88	16,821,248.59	17,017,042.14	7,304,595.82	35,312,317.72	2,217,425.46	16,548,990.51	134,271.10	138,834,995.43
Sep	9,832,514.38	3,139,646.07	7,166,350.39	20,531,087.56	5,145,328.35	9,505,277.06	17,311,149.20	10,234,597.66	39,731,086.51	2,011,372.45	16,155,747.87	148,612.60	140,912,770.08
Oct	9,923,335.07	3,346,982.41	9,919,999.10	22,567,492.87	6,180,403.26	21,021,376.92	20,667,754.18	10,950,177.78	41,131,626.19	2,597,408.09	18,072,164.45	176,961.04	166,555,681.37
Nov	10,683,513.83	3,732,868.95	9,809,491.39	28,228,980.99	6,029,490.43	17,343,347.49	23,027,365.97	14,471,556.33	47,870,360.42	2,986,050.60	19,045,412.04	209,168.81	183,437,607.25
Dec	10,252,495.91	4,965,472.75	12,171,250.70	30,987,168.50	5,959,867.34	19,653,397.02	25,666,591.10	13,188,851.04	55,454,341.21	3,901,504.33	22,313,591.00	519,773.38	205,034,304.27
									1,000.00				
2021													
Jan	12,195,945.09	4,725,946.72	13,067,828.56	32,314,625.60	6,804,952.50	19,638,789.03	27,577,248.19	13,566,042.79	60,234,250.60	3,993,814.34	22,146,327.53	314,523.37	216,580,294.30
Feb	12,215,925.38	4,335,293.23	13,268,343.18	31,820,079.48	6,327,338.72	19,480,197.75	27,088,789.92	11,873,767.24	62,647,881.89	3,583,509.91	23,594,651.47	323,276.77	216,559,054.94
Mar	12,088,596.94	5,009,117.91	15,457,881.64	33,668,114.17	7,879,623.60	17,019,379.33	29,927,193.06	12,664,366.44	68,761,992.24	4,513,060.17	25,352,486.13	371,874.60	232,711,686.23
Apr	14,293,712.79	6,264,137.34	17,624,611.65	35,860,252.53	7,955,587.69	18,411,151.82	32,890,743.11	11,445,151.89	81,410,668.87	4,248,558.67	27,176,673.47	411,001.01	257,992,250.84
May	14,731,869.47	5,542,211.64	19,231,383.69	37,283,237.74	7,903,622.65	19,756,317.30	33,027,214.88	12,276,168.05	84,596,653.48	4,504,355.67	28,445,264.85	378,185.06	278,196,484.46
Jun	15,628,935.51	6,154,316.52	20,722,752.27	39,604,431.48	7,861,552.67	21,455,061.82	36,502,664.43	23,449,074.86	92,196,178.85	4,756,434.86	29,731,644.54	415,508.64	298,478,556.45
Jul	14,899,561.10	6,742,913.66	25,082,739.85	39,720,936.02	9,580,503.84	24,570,675.98	31,312,003.24	38,751,108.53	94,151,108.53	5,021,547.73	32,324,374.53	568,402.62	322,850,073.17
Aug	14,056,945.25	6,611,127.05	26,897,316.63	39,624,666.33	9,778,338.93	27,046,620.96	40,693,944.15	26,504,554.01	84,766,848.12	4,915,399.24	33,960,935.12	645,902.41	315,502,598.18
Sep	14,777,285.47	6,264,492.08	27,413,062.10	45,375,795.43	10,337,697.22	25,786,388.31	43,113,093.11	30,700,846.40	95,985,614.84	5,605,871.74	37,606,703.52	687,817.24	343,654,667.37
Oct	14,923,669.66	8,437,829.51	26,583,413.65	47,841,912.79	11,477,927.22	29,796,762.93	51,676,553.79	49,115,499.00	111,611,484.23	5,940,819.15	35,043,857.03	618,831.05	393,068,559.99
Nov	14,147,912.21	7,546,852.86	27,174,334.28	44,238,573.41	11,949,923.74	27,199,271.57	52,401,389.32	49,817,772.34	115,576,831.01	5,911,967.57	37,770,843.26	751,068.72	394,486,740.29
Dec	16,522,401.63	9,204,283.51	26,835,545.00	47,381,404.66	15,303,976.78	43,092,763.28	57,822,911.04	61,555,101.22	122,091,550.61	6,093,367.35	40,046,246.70	1,319,573.65	447,269,125.42
2022													
Jan	17,399,268.45	9,928,816.10	28,146,847.17	46,285,881.10	15,060,177.49	34,087,881.41	60,888,346.70	38,232,883.69	135,579,116.46	6,454,492.58	32,504,960.47	745,336.00	425,314,007.61
Feb	20,260,983.50	9,641,974.72	32,159,803.23	50,825,844.50	15,235,028.54	35,068,548.54	49,157,612.17	43,769,514.96	146,423,512.16	7,768,846.48	36,257,363.98	724,522.36	447,293,555.15
Mar	22,638,817.86	11,683,937.35	34,271,841.32	61,002,811.60	20,352,647.27	34,501,628.57	57,839,997.29	60,678,395.30	173,444,002.60	9,467,563.85	43,160,654.72	970,393.82	530,012,691.56
Apr	26,926,844.72	12,304,918.39	34,924,202.54	67,201,357.79	21,444,798.07	38,606,872.21	61,303,321.13	64,980,792.31	216,612,532.66	10,455,473.89	45,951,692.03	939,217.87	601,652,023.61
May	39,564,579.03	21,954,770.23	42,666,739.38	108,620,498.72	28,757,840.78	54,108,110.44	88,717,845.18	107,568,244.73	291,739,801.56	14,310,137.61	65,853,453.06	1,190,747.91	865,052,768.60
Jun	45,956,287.64	26,686,177.09	47,155,850.80	128,881,143.56	32,783,755.16	60,238,449.95	120,389,795.99	120,389,795.99	326,034,986.61	17,068,663.50	108,828,797.15	1,325,268.69	1,011,597,098.65
Jul	40,699,352.12	28,329,526.03	45,417,841.09	128,847,329.07	21,958,796.02	62,326,844.37	102,536,398.88	112,642,685.48	401,574,333.33	17,902,000.20	112,555,899.49	1,117,408.25	1,076,908,434.33
Aug	68,438,409.63	39,107,020.53	53,616,955.67	171,501,037.83	25,370,674.58	68,913,237.19	162,326,617.25	137,243,494.58	538,409,018.36	23,523,309.06	146,121,882.24	1,197,164.45	1,435,768,821.37
Sep	81,174,128.75	51,501,554.76	58,104,791.47	204,056,688.73	63,246,197.07	174,562,749.46	172,521,502.90	138,936,277.91	626,755,883.05	25,607,188.82	182,077,675.02	1,177,650.78	1,789,722,288.71
Oct	83,201,043.64	63,984,990.31	67,031,137.91	207,367,773.63	40,617,325.27	155,873,800.58	179,051,392.63	157,121,308.46	575,293,016.53	27,092,268.91	201,852,712.89	3,193,614.07	1,761,680,384.82
Nov	88,153,064.47	61,978,896.61	78,744,676.95	236,152,455.10	39,915,042.93	100,872,718.26	214,281,243.03	200,240,592.45	606,580,960.90	32,903,876.70	233,604,874.73	119,223.24	1,893,547,625.35
Dec	106,799,918.36	60,886,327.29	73,518,960.29	260,923,049.61	48,959,835.11	122,528,998.69	242,741,914.11	171,982,170.05	747,151,447.16	37,453,518.81	270,164,633.75	10,753,958.63	2,153,864,731.86
2023													
Jan	114,820,700.76	79,460,381.87	82,589,902.30	305,204,829.91	45,118,619.63	135,072,311.14	263,222,364.10	223,632,204.71	896,980,184.31	37,534,721.96	288,326,194.21	7,916,696.92	2,479,879,111.81
Feb	118,375,609.69	85,995,682.64	93,761,236.16	312,626,341.50	56,688,432.58	147,245,179.36	266,610,300.93	273,709,371.16	938,437,753.70	39,909,193.60	292,841,727.23	6,842,518.78	2,633,043,347.35
Mar	119,963,933.20	85,731,698.36	100,697,025.58	322,453,842.97	45,619,349.07	148,455,496.20	286,712,763.58	273,572,570.94	1,064,798,433.61	44,685,590.57	330,031,150.72	14,190,575.51	2,836,912,430.30
Apr	131,146,380.30	89,322,733.64	99,723,066.84	324,249,300.08	45,619,349.07	149,245,957.86	289,670,780.41	273,578,020.75	1,072,456,655.25	44,926,335.64	331,068,417.40	2,865,197,572.73	3,065,197,572.73
May	269,460,363.15	210,867,012.29	216,906,304.04	631,589,937.93	113,357,505.65	362,294,051.43	581,761,350.37	545,536,680.63	2,504,454,969.80	102,648,366.24	702,960,786.40	28,985,518.44	6,270,822,846.38
Jun	581,642,309.76	428,772,683.41	410,699,487.74	1,366,510,052.55	227,784,986.62	700,617,673.80	1,094,382,949.63	1,185,026,806.70	5,283,380,622.25	199,474,750.17	1,564,762,675.09	40,673,167.41	13,083,728,165.12
Jul	535,377,934.43	426,808,429.52	413,150,823.99	1,394,747,348.19	206,866,966.84	711,462,740.79	1,157,802,106.76	1,082,908,623.76	4,533,520,705.60	184,470,180.50	1,464,856,207.23	37,277,944.87	12,059,150,012.48
Aug	537,439,303.14	432,479,784.07	413,226,172.28	1,343,458,227.81	285,743,813.63	662,607,567.90	1,197,898,912.17	1,004,826,660.33	4,639,684,933.86	209,521,849.57	1,553,047,811.00		

TABLE 8.1: COMMERCIAL BANKS LENDING RATES (percent per annum)

End of	Weighted Lending Rates			
	Individuals		Corporates	
	Minimum	Maximum	Minimum	Maximum
2021				
Jan	32.65	55.57	24.77	24.77
Feb	36.67	52.01	21.36	21.36
Mar	35.83	55.77	22.61	22.61
Apr	35.22	57.08	22.59	22.59
May	34.84	56.21	21.76	21.76
Jun	36.25	57.04	22.46	22.46
Jul	36.56	57.00	21.66	21.66
Aug	41.06	57.39	39.65	39.65
Sep	40.61	58.44	39.50	39.50
Oct	41.86	58.68	45.81	45.81
Nov	39.13	58.74	38.10	38.10
Dec	39.34	58.65	37.94	37.94
2022				
Jan	39.32	57.26	39.62	39.62
Feb	40.55	57.28	64.02	64.02
Mar	40.74	57.83	43.88	43.88
Apr	38.15	59.59	45.56	45.56
May	38.01	59.70	47.25	47.25
Jun	38.45	60.09	48.25	48.25
Jul	82.75	123.71	165.45	165.45
Aug	88.46	123.46	155.96	155.96
Sep	98.07	123.64	158.46	158.46
Oct	99.37	127.72	115.26	115.26
Nov	99.03	127.58	110.97	110.97
Dec	99.02	125.64	110.83	110.83
2023				
Jan	90.05	125.64	116.03	116.03
Feb	60.12	125.64	80.88	80.88
Mar	74.35	110.30	81.46	81.46
Apr	74.48	105.75	86.96	86.96
May	77.86	107.41	83.61	83.61
Jun	76.33	103.85	92.64	92.64
Jul	77.82	103.56	94.80	94.80
Aug	77.63	102.79	93.18	93.18
Sep	76.49	100.20	92.69	92.69
Oct	71.72	102.10	92.43	92.43
Nov	70.15	101.53	93.15	93.15
Dec	69.02	101.71	93.77	93.77
2024				
Jan	70.18	100.81	95.24	95.24
Feb	76.06	99.20	93.76	166.71
Mar	73.43	98.46	91.40	165.42
*Apr	25.91	32.10	24.29	32.52
*May	25.17	31.72	24.52	32.65

Source: Reserve Bank of Zimbabwe, 2024

*Lending rates are for ZiG loans

TABLE 8.2 : COMMERCIAL BANKS DEPOSIT RATES (percent per annum)

	SAVINGS		3 MONTHS	
	Minimum	Maximum	Minimum	Maximum
2022				
Jan	3.66	5.76	13.16	16.95
Feb	3.72	6.29	16.68	16.84
Mar	3.83	5.94	14.83	16.95
Apr	4.22	6.35	16.78	18.53
May	4.21	6.35	16.44	18.42
Jun	4.21	6.35	16.61	19.05
Jul	21.06	23.44	50.14	54.58
Aug	20.09	20.25	52.97	57.29
Sep	20.09	20.25	57.25	61.08
Oct	20.09	20.25	54.06	60.55
Nov	20.38	20.53	56.69	60.87
Dec	18.03	18.03	55.32	60.08
2023				
Jan	18.03	18.03	55.32	60.08
Feb	18.03	18.03	55.32	60.08
Mar	34.01	35.26	68.06	73.39
Apr	36.00	36.50	63.06	71.72
May	35.33	35.88	61.31	69.61
Jun	35.33	33.60	59.18	65.00
Jul	34.29	35.29	61.67	69.44
Aug	34.29	35.60	57.67	70.35
Sep	34.29	35.60	61.67	69.33
Oct	34.29	35.60	61.67	70.35
Nov	35.00	38.27	60.81	69.76
Dec	34.38	37.13	57.94	65.65
2024				
Jan	33.75	37.13	56.06	65.65
Feb	33.75	37.13	56.06	65.65
Mar	33.75	37.13	56.28	64.78
*Apr	5.22	5.34	5.51	6.04
*May	3.75	3.88	5.26	5.78

Source: Reserve Bank of Zimbabwe, 2024

* Deposit rates depict the range of rates quoted by banks.

*Deposit rates are for ZiG deposits

TABLE 9.1 : MONTHLY INFLATION - % CHANGE IN CONSUMER PRICE INDEX

	ALCOHOLIC BEVERAGES & TOBACCO	CLOTHING & FOOTWEAR	HOUSING, WATER, ELECTRICITY, GAS & OTHER FUELS	FURNITURE AND EQUIPMENT	HEALTH	TRANSPORT	COMMUNICATION	RECREATION & CULTURE	EDUCATION	RESTAURANTS & HOTELS	MISC. GOODS & SERVICES	TOTAL NON FOOD	FOOD & NON ALCOHOLIC BEVERAGES	ALL ITEMS
WEIGHTS	4.90	4.35	27.62	5.29	1.42	8.39	2.65	2.27	4.25	1.08	6.46	68.70	31.30	100
2021														
Jan	2.84	1.59	1.52	4.26	2.44	2.57	1.33	-0.72	1.69	-0.48	3.81	2.14	2.87	2.33
Feb	1.27	-0.30	-1.71	-0.49	1.59	1.07	-1.60	10.67	-2.10	-0.94	0.55	-0.16	2.03	0.41
Mar	0.15	-0.08	1.24	4.37	-2.37	0.65	4.58	-0.29	0.02	0.74	-0.18	0.99	0.52	0.87
Apr	0.12	-0.57	0.45	-0.05	0.24	0.70	0.58	-0.99	17.14	1.41	-3.37	0.87	0.25	0.71
May	0.62	2.41	1.41	0.84	-0.02	0.80	0.07	42.32	1.32	2.36	0.65	2.15	0.28	1.66
Jun	1.64	3.87	9.35	6.99	1.48	0.57	0.97	1.28	4.88	2.93	1.92	5.07	2.37	4.38
Jul	1.29	1.73	0.51	-0.08	-0.69	0.33	0.10	0.58	-0.05	-0.01	1.15	0.51	0.06	0.40
Aug	1.73	0.72	1.03	0.99	1.14	1.06	3.56	0.29	-0.05	2.11	1.60	1.10	0.74	1.01
Sep	1.76	0.08	1.58	1.43	0.64	0.01	3.95	0.87	-0.78	1.33	1.53	1.27	2.30	1.53
Oct	1.51	0.77	0.84	1.78	0.72	1.47	7.45	0.36	2.11	1.62	0.91	1.53	3.51	2.03
Nov	0.85	0.34	1.47	1.12	0.68	1.22	4.43	0.37	-6.92	1.67	1.11	0.96	3.19	1.53
Dec	2.41	0.98	1.50	1.30	0.64	-0.77	0.26	1.01	0.03	1.14	2.05	1.17	1.99	1.38
2022														
Jan	1.08	0.64	2.14	0.42	0.71	0.43	1.51	12.08	0.94	1.90	0.11	1.68	2.53	1.90
Feb	1.82	3.39	1.89	1.79	0.68	1.08	0.60	0.92	0.35	1.39	1.69	1.76	3.43	2.20
Mar	2.59	2.24	0.77	1.22	0.96	5.86	2.27	0.82	0.15	1.02	-0.06	1.67	3.05	2.04
Apr	3.38	1.68	14.21	5.59	1.77	1.93	1.73	1.76	2.91	6.05	1.87	7.17	6.94	7.11
May	3.70	8.73	2.02	1.21	2.46	3.36	2.47	2.06	0.48	3.33	3.78	3.12	9.56	4.85
Jun	8.20	7.94	12.49	10.84	13.72	5.65	4.95	6.63	4.63	5.35	9.86	9.85	17.32	11.95
Jul	4.57	1.91	8.66	5.87	3.74	2.16	1.21	2.64	11.86	2.00	2.15	5.88	12.09	7.71
Aug	3.71	2.47	2.01	1.44	1.98	1.59	1.91	1.12	0.41	1.21	2.93	2.02	4.94	2.91
Sep	-2.39	-1.80	5.21	-3.33	-0.66	-1.20	10.12	0.36	8.21	-1.80	-1.68	1.99	-3.23	0.36
Oct	0.81	1.31	6.74	1.83	0.72	0.88	2.83	1.21	0.10	0.72	0.68	3.29	2.10	2.93
Nov	-0.23	0.35	0.34	0.60	0.85	0.25	4.30	0.48	16.78	19.32	0.85	1.71	0.23	1.27
Dec	0.39	0.76	0.20	-0.24	0.03	-0.15	3.91	-0.10	0.00	0.73	-0.23	0.28	1.55	0.66
2023														
Jan	0.17	-0.62	0.81	0.34	0.26	0.45	-2.36	0.45	0.06	-0.58	0.54	0.33	-0.77	0.00
Feb	-3.59	-1.56	-3.56	-1.27	-1.02	-4.40	-1.81	-2.19	0.06	-3.63	-7.55	-3.40	-4.54	-3.73
Mar	-0.57	-0.46	-0.01	-0.71	-0.10	-0.13	0.44	-0.24	0.16	-0.16	-0.42	-0.18	-0.66	-0.32
Apr	1.05	0.05	2.79	-0.18	0.92	0.18	0.59	0.43	0.53	0.35	0.55	1.36	1.96	1.54
May	3.05	0.34	3.03	-0.08	2.87	1.74	6.10	1.65	1.19	0.99	2.35	2.34	3.37	2.64
Jun	11.74	0.93	14.88	-0.85	9.19	5.27	23.88	5.15	3.07	3.15	6.58	9.53	18.23	12.10
Jul	1.68	0.51	0.36	0.56	-0.34	0.69	0.68	-0.11	1.04	2.82	1.11	0.65	1.85	1.03
Aug	-1.11	-0.11	-2.00	-0.19	-0.02	-0.02	-0.61	-0.53	-0.45	-0.40	-1.37	-1.12	-1.83	-1.34
Sep	0.32	0.04	0.34	0.30	-0.38	0.63	5.77	-0.21	5.97	-0.10	0.91	0.91	1.05	0.95
Oct	1.91	1.10	4.96	0.54	1.89	2.81	-2.69	0.43	-4.21	0.53	2.43	2.48	2.42	2.46
Nov	1.94	0.60	8.93	-0.36	2.45	1.30	3.24	0.79	4.28	-0.67	1.07	4.39	4.89	4.54
Dec	3.49	1.41	5.40	0.63	0.55	0.86	0.71	1.92	0.22	1.07	1.95	2.90	8.64	4.70
2024														
Jan	2.65	-2.53	5.48	-1.30	-3.17	11.61	-8.22	-3.90	5.52	0.78	-3.36	2.50	15.01	6.58
Feb	3.31	0.26	4.84	0.64	2.77	2.47	8.40	2.25	1.67	1.15	3.35	2.98	9.83	5.39
Mar	2.48	0.76	4.89	0.62	2.44	2.39	10.08	2.14	2.02	1.75	2.85	2.48	8.13	4.89
Apr	1.35	0.66	3.69	0.28	0.77	1.01	2.60	0.18	6.85	-0.26	0.87	4.19	4.19	2.94
*May	-6.05	-1.36	0.54	-3.09	-1.14	-0.73	0.65	-2.60	0.00	-0.90	-2.82	-0.99	-5.55	-2.42

Source: Zimstat, 2024

*May statistics are in ZiG

TABLE 9.2 : YEARLY INFLATION - % CHANGE IN CONSUMER PRICE INDEX

	NON-FOOD INFLATION												FOOD INFLATION	ALL ITEMS
	ALCOHOLIC BEVERAGES & TOBACCO	CLOTHING & FOOTWEAR	HOUSING, WATER, ELECTRICITY, GAS & OTHER FUELS	FURNITURE AND EQUIPMENT	HEALTH	TRANSPORT	COMMUNICATION	RECREATION & CULTURE	EDUCATION	RESTAURANTS & HOTELS	MISC. GOODS & SERVICES	TOTAL NON FOOD	FOOD & NON ALCOHOLIC CEVAGERAGES	
WEIGHTS	4.90	4.35	27.62	5.29	1.42	8.39	2.65	2.27	4.25	1.08	6.46	68.70	31.30	100
2021														
Jan	20.60	-2.07	36.36	-1.28	10.32	-3.60	128.10	-5.01	-21.25	-30.63	-23.35	12.89	17.44	14.03
Feb	39.34	9.50	38.02	12.01	25.35	8.60	82.62	14.90	-32.54	-21.66	-17.59	18.72	29.84	21.45
Mar	14.17	6.58	29.52	3.24	5.87	19.12	92.07	6.36	6.81	-2.73	-7.44	18.40	22.51	19.45
Apr	14.30	5.98	30.11	3.19	6.13	19.96	93.18	5.32	25.12	-1.35	-10.56	19.42	22.82	20.29
May	15.83	14.44	20.88	4.68	16.10	25.82	102.08	55.83	36.63	-3.32	-9.20	20.10	22.47	20.70
Jun	12.75	14.64	22.39	15.03	9.18	12.04	70.11	42.04	30.41	4.24	-7.69	19.04	28.60	21.31
Jul	6.39	11.64	23.80	10.15	3.85	6.95	52.67	52.59	39.02	13.15	8.80	18.71	15.01	17.76
Aug	13.21	12.09	24.34	11.12	5.35	6.76	15.74	59.33	35.23	16.34	4.54	18.18	18.05	18.15
Sep	14.96	12.70	25.60	16.41	6.74	12.34	14.92	60.58	36.28	21.35	9.67	20.76	21.15	20.86
Oct	17.72	16.64	21.34	23.27	7.60	13.62	22.43	60.80	38.87	20.39	10.27	21.05	24.80	21.99
Nov	16.80	14.54	22.11	24.82	6.57	13.72	27.83	60.49	15.38	17.92	11.34	20.15	24.28	21.19
Dec	17.38	12.07	20.56	24.61	6.62	10.09	28.48	61.86	16.79	14.71	12.21	19.00	21.96	19.76
2022														
Jan	15.38	11.03	21.29	20.02	4.81	7.80	28.71	82.72	15.93	17.46	8.22	18.46	21.56	19.26
Feb	16.00	15.14	25.74	22.76	3.87	7.80	31.58	66.63	18.83	20.23	9.44	20.73	23.23	21.38
Mar	18.84	17.81	25.15	19.07	7.41	13.39	28.97	68.48	18.98	20.57	9.57	21.54	26.32	22.80
Apr	22.71	20.48	42.29	25.78	9.04	14.77	30.15	73.15	4.52	26.09	15.50	29.14	34.75	30.60
May	26.46	27.91	43.15	26.23	11.74	17.68	33.27	24.17	3.66	27.29	19.09	30.37	47.22	34.70
Jun	34.62	32.92	47.25	30.78	25.21	23.62	38.51	30.74	3.41	30.29	28.37	36.30	68.72	44.47
Jul	38.99	33.16	59.19	38.55	30.80	25.88	40.04	33.42	15.74	32.91	29.63	43.58	89.00	54.99
Aug	41.70	35.49	60.73	39.17	31.89	26.54	37.81	34.54	16.27	31.74	31.34	44.88	96.89	57.92
Sep	35.93	32.94	66.48	32.64	30.19	25.02	45.99	33.85	26.81	27.66	27.17	45.91	86.25	56.09
Oct	35.00	33.64	76.23	32.71	30.19	24.29	39.72	34.98	24.31	26.52	26.89	48.43	83.72	57.47
Nov	33.55	33.65	74.26	32.03	30.42	23.10	39.54	35.12	55.96	48.48	26.56	49.54	78.43	57.06
Dec	30.92	33.36	72.02	30.01	29.63	23.87	44.62	33.64	55.91	47.88	23.73	48.22	77.66	55.93
2023														
Jan	29.74	31.69	69.78	29.91	29.05	23.89	39.11	19.78	54.56	44.29	24.25	46.26	71.94	53.03
Feb	22.86	25.38	60.69	26.01	26.87	23.89	35.79	16.09	54.11	37.14	12.96	38.85	58.69	44.14
Mar	19.07	22.07	59.46	23.60	25.55	23.89	33.36	14.86	54.13	35.54	12.56	36.31	52.99	40.80
Apr	16.38	20.11	43.52	16.85	24.51	23.89	31.87	13.36	50.56	28.25	11.10	28.93	45.87	33.48
May	15.66	10.84	44.93	15.37	25.01	23.89	36.54	12.90	51.63	25.34	9.57	27.96	37.63	30.68
Jun	19.45	3.65	48.01	3.20	20.03	23.89	61.17	11.33	49.36	22.73	6.31	27.58	38.70	30.85
Jul	16.14	2.22	36.71	-1.98	15.30	23.89	60.33	8.34	34.91	23.72	5.22	21.28	26.03	22.74
Aug	10.74	-0.36	31.33	-3.54	13.04	23.89	56.36	6.57	33.75	21.75	0.82	17.55	17.90	17.66
Sep	13.82	1.52	25.26	0.08	13.36	23.89	50.18	5.97	30.99	23.86	3.48	16.31	23.12	18.36
Oct	15.06	1.31	23.16	-1.20	14.66	7.28	42.11	5.15	25.35	23.64	5.28	15.40	23.50	17.82
Nov	17.55	1.56	33.71	-2.14	16.48	8.40	40.66	5.48	11.94	2.93	5.52	18.43	29.24	21.63
Dec	21.19	2.22	40.65	-1.28	17.09	9.49	36.33	7.61	12.19	3.27	7.82	21.52	38.26	26.52
2024														
Jan	24.18	0.25	47.17	-2.90	13.08	21.65	28.14	2.95	18.31	4.68	3.64	24.16	60.25	34.84
Feb	33.06	2.10	59.99	-1.02	17.41	30.39	41.46	7.62	20.22	9.87	15.86	32.35	84.37	47.62
Mar	37.15	3.35	67.82	0.31	20.39	33.68	55.04	10.19	22.44	11.97	19.67	36.58	100.68	55.34
Apr	37.55	3.98	69.28	0.77	20.20	34.79	58.13	9.93	30.14	11.30	20.06	42.42	105.07	57.48

Source: Zimstat, 2024

TABLE 10 : SELECTED INTERNATIONAL EXCHANGE RATES

END OF	USA DOLLAR	SOUTH AFRICAN RAND	BOTSWANA PULA	JAPANESE YEN	EURO	POUND STERLING
2022						
Jan	115.422	7.4069	9.8109	0.9995	128.8401	154.8332
Feb	124.019	8.0738	10.7214	1.0732	138.2625	165.6148
Mar	142.424	9.8091	12.4763	1.1665	159.0161	186.8670
Apr	159.348	10.0334	13.1064	1.2217	167.9530	199.4880
May	290.888	18.7787	24.3182	2.2757	312.8351	367.1438
Jun	366.269	22.5194	29.7593	2.6861	382.8607	444.3572
Jul	416.289	25.2673	33.2407	3.1299	425.1560	507.7061
Aug	546.825	32.3336	42.8164	3.9498	548.9033	638.9381
Sep	621.532	34.5376	46.4284	4.2999	609.9716	691.9517
Oct	632.137	34.7014	47.2839	4.2742	628.8500	732.8998
Nov	654.865	38.5947	51.0140	4.7279	677.5889	784.3319
Dec	671.447	39.5836	52.6414	5.0669	715.4935	809.2610
2023						
Jan	796.522	45.7487	61.8897	6.1132	863.6683	983.1863
Feb	889.133	48.1898	66.7294	6.5202	941.1468	1070.6489
Mar	929.862	52.0727	71.3204	6.9912	1013.3634	1151.6803
Apr	1047.445	57.1437	79.4723	7.7646	1151.0384	1309.3061
May	2577.056	130.3252	186.5789	18.4901	2755.1310	3192.3286
Jun	5739.000	306.2597	425.5469	39.6710	6240.5886	7250.9396
Jul	4516.803	255.8972	346.4388	31.8342	4971.8704	5801.8328
Aug	4608.107	246.2293	343.3039	31.5721	5031.5916	5860.1292
Sep	5466.747	288.5390	396.3391	36.6073	5782.7246	6680.6377
Oct	5698.961	301.1746	417.7338	37.9539	6039.7584	6920.5328
Nov	5791.080	309.3526	429.6053	39.3710	6363.8242	7330.4810
Dec	6104.723	329.1177	455.4123	43.1811	6753.9598	7783.5213
2024						
Jan	10152.393	555.5556	745.3522	65.3595	10985.0050	12870.8909
Feb	14912.829	769.2308	1082.9160	99.0099	16156.7220	18886.3930
Mar	22055.474	1165.3008	1610.0496	145.7394	23872.8448	27868.1939
*Apr	13.4301	0.7185	0.9542	0.0857	14.3722	16.8366
*May	13.3177	0.7089	0.9762	0.0850	14.4098	16.9421

Source: Reserve Bank of Zimbabwe, 2024

*The Reserve Bank introduced a new currency ZiG on 5 & recalibrated exchange rates to ZiG

* Statistics are denominated in ZiG

TABLE 11: ZIMBABWE STOCK MARKET STATISTICS

END OF	All Share Index*	Mining Index	Market Turnover ZWL\$ million	Volume of Shares	Market Capitalisation ZWL\$ millions
2020					
Jan	332.9	344.9	304.86	179,559,446	43,426.5
Feb	473.13	826.73	360.13	172,678,984	60,987.5
Mar	456.21	720.47	425.24	237,667,043	58,612.1
Apr	488.60	826.64	269.66	107,308,931	63,387.9
May	1180.14	1582.86	568.96	218,832,930	152,719.7
June**	1788.75	3995.48	379.93	519,901,300	228,577.1
Aug	1389.23	3709.15	1,026.76	164,501,200	175,678.4
Sep	1638.17	4128.52	4,640.88	1,093,040,821	206,502.5
Oct	1476.87	3792.35	986.70	397,006,127	179,690.0
Nov	1595.59	3322.22	4,103.78	470,899,659	193,270.8
Dec	2636.34	4134.09	2,734.50	316,737,200	317,879.3
2021					
Jan	3600.82	4356.74	3,513.59	2,477,166,688	434,856.23
Feb	4154.37	6683.44	1,529.25	149,031,800	501,184.95
Mar	4489.47	5315.39	4,517.14	203,633,747	531,742.64
Apr	4641.11	5061.28	3,075.98	223,494,202	540,745.24
May	5428.28	6820.54	3,917.41	188,748,200	634,011.15
Jun	6194.88	6211.49	4458.87	248,500,624	745,175.95
Jul	6818.29	6621.17	2921.32	181,010,800	803,900.15
Aug	6652.31	6115.85	3456.94	147,232,800	792,291.48
Sep	8580.16	6014.53	4730.25	2,909,442,557	1,032,472.92
Oct	11329.48	6652.04	5661.76	108,843,000	1,378,227.92
Nov	10695.57	7193.11	9883.24	791,653,520	1,290,069.75
Dec	12079.74	7815.37	17577.25	228,225,060	1,317,205.11
2022					
Jan	12079.74	8196.79	3704.23	82,402,101	1,475,217.45
Feb	14990.42	9300.03	7979.35	156,327,700	1,863,028.60
Mar	15858.92	11289.34	8186.00	117,815,800	1,964,738.42
Apr	28391.75	30527.28	11366.89	193,411,483	3,547,347.52
May	23072.46	20021.24	8211.45	195,475,400	2,893,011.70
June	19791.94	20021.24	14570.16	271,227,100	2,439,165.45
July	16594.91	20021.24	23673.34	239,937,180	2,068,222.01
Aug	13705.12	15473.37	8674.85	139,225,500	1,685,592.28
Sept	14771.65	18929.75	5128.54	137,092,750	1,819,157.07
Oct	15072.14	23659.53	8657.90	201,566,548	1,826,101.68
Nov	14577.46	25478.67	7680.78	90,311,600	1,610,203.36
Dec	19493.85	25487.77	27753.79	472,926,200	2,044,869.14
2023					
Jan	22813.24	25496.86	11638.16	102,792,200	2,460,037.66
Feb	28548.02	29207.92	24410.54	164,006,458	2,576,324.76
Mar	38568.48	37359.78	14262.67	97,920,600	3,381,456.06
Apr	41391.62	36393.55	16756.85	74,505,000	3,482,408.54
May	108195.29	52765.85	34867.41	206,593,600	8,939,058.47
Jun	171408.90	76960.49	85279.40	192,473,571	13,987,476.83
Jul	114746.13	89512.59	40846.72	176,547,600	9,171,346.28
Aug	125134.79	109159.36	39214.53	103,854,600	9,723,577.74
Sep	126642.42	125531.67	91310.72	343,359,119	9,873,493.87
Oct	157083.06	125531.67	31773.08	64,000,500	12,576,665.45
Nov	191271.68	148883.44	54864.31	162,675,500	15,311,628.01
Dec	210833.92	145542.27	109727.94	254,991,213	16,812,914.36
2024					
Jan	542743.66	163733.73	112532.73	79,766,490	43,459,150.79
Feb	525570.76	216534.42	103474.44	73,940,200	41,499,016.93
Mar	873263.38	218308.09	123025.50	54,297,600	49,235,325.40
2024					
*Apr	98.82	114.07	22,304,969	21,943,400	28,571.12
*May	101.07	114.07	75,913,056	58,831,200	29,394.99

Source: Zimbabwe Stock Exchange, 2024

*All Share index was introduced in January, 2018

**As at 26 June 2020

***The ZSE rebased indices to 100 in April 2024 following the introduction of the ZiG

*Statistics are denominated in ZiG

TABLE 12.1 : ZETSS AND RETAIL PAYMENTS

Values of Transactions (ZW\$ millions)

END OF	ZETSS	CHEQUE	POS	ATM	MOBILE	INTERNET
2023						
Apr	1594.5	-	136.7	31.9	142.1	602.9
May	2511.4	-	207.4	69.3	212.9	1310.7
Jun	6827.3	-	353.1	246.2	484.4	2657.6
Jul	7147.5	-	413.7	216.7	648.4	2432.3
Aug	7186.0	-	407.4	260.1	576.5	2499.2
Sep	7479.9	-	488.9	309.5	669.4	3100.0
Oct	7927.5	-	506.1	330.8	786.1	3466.4
Nov	9479.0	-	572.0	360.8	800.0	3824.9
Dec	10563.9	-	722.4	437.3	1042.2	4062.3
2024						
Jan	11319.8	-	763.3	740.8	1638.0	8812.4
Feb	15327.4	-	1143.5	1072.2	2212.8	11833.0
Mar	24185.4	-	1575.6	1786.8	2219.1	14945.0
*Apr	41317.5	-	2063.0	2797.1	4754.9	15996.5
*May	53741.3	0.0	3335.6	3355.4	7058.0	22545.4

Source: Reserve Bank of Zimbabwe, 2024

*Statistics are denominated in ZiG

TABLE 12.2 : ZETSS AND RETAIL PAYMENTS**Volumes of Transactions (000's)**

END OF	ZETSS	CHEQUE	POS	ATM	MOBILE	INTERNET
2023						
Apr	907.6	-	14375.1	526.7	47171.7	1982.9
May	1119.2	-	12808.7	576.7	49143.2	2233.6
Jun	1050.2	-	10190.6	606.0	45488.8	1213.0
Jul	942.7	-	8226.8	1777.1	42648.8	993.7
Aug	888.0	-	8434.6	653.6	42648.8	977.5
Sep	964.1	-	9659.0	703.6	45148.7	1061.4
Oct	949.1	-	9449.3	619.0	50640.6	904.4
Nov	924.5	-	9525.7	623.3	52332.4	1048.5
Dec	924.5	-	11846.0	776.5	56451.0	1026.2
2024						
Jan	914.9		10017.9	708.1	52445.0	882.8
Feb	889.7	-	7868.7	737.5	51545.9	904.2
Mar	941.1	-	7569.3	728.4	58151.4	921.4
*Apr	791.8	-	5729.5	744.8	30450.4	938.0
*May	1046.6	0.0	7950.1	899.4	42290.8	1690.3

Source: Reserve Bank of Zimbabwe, 2024

*Statistics are denominated in ZiG

TABLE 13 : MERCHANDISE TRADE STATISTICS
(US\$ millions)

END OF	EXPORTS	IMPORTS	TOTAL TRADE	TRADE BALANCE
2021				
Jan	282.9	460.3	743.20	-177.4
Feb	340.8	451.9	792.70	-111.1
Mar	461.8	527.2	989.00	-65.4
Apr	444.7	489.9	934.60	-45.2
May	486.8	503.1	989.91	-16.2
Jun	502.5	622.2	-119.7	-55.6
Jul	629.9	667.6	-37.7	-37.7
Aug	597.3	630.2	-32.9	-32.9
Sep	514.4	666.7	-152.2	-152.3
Oct	535.5	713.6	-178.1	-178.1
Nov	647.6	684.3	-36.7	-36.7
Dec	591.2	771.2	-179.9	-180.0
2022				
Jan	543.9	633.2	-88.1	-89.3
Feb	438.0	630.1	1068.1	-192.2
Mar	557.6	713.8	1271.4	-156.2
Apr	587.3	637.2	1224.5	-49.9
May	513.1	714.4	1227.6	-201.3
Jun	541.0	751.4	1292.3	-210.4
Jul	548.4	728.2	1276.6	-179.9
Aug	493.6	759.9	1253.4	-266.3
Sep	552.3	765.3	1317.6	-213.1
Oct	502.3	770.5	1272.8	-268.2
Nov	674.6	802.2	1476.8	-127.5
Dec	633.5	772.6	1406.1	-139.1
2023				
Jan	427.8	633.8	1061.6	-206.0
Feb	435.9	623.5	1059.3	-187.6
Mar	515.3	746.4	1261.7	-231.1
Apr	555.5	708.6	1264.1	-153.0
May	654.2	850.3	1504.6	-196.1
Jun	641.5	727.4	1368.9	-85.9
Jul	603.2	782.9	1386.2	-179.7
Aug	649.8	820.2	1470.1	-170.4
Sep	678.1	772.7	1450.8	-94.6
Oct	831.9	901.5	1733.4	-69.6
Nov	681.4	827.3	1508.7	-145.9
Dec	550.6	819.4	1370.0	-268.7
				0.0
2024				
Jan	539.9	686.9	1226.7	-147.0
Feb	644.0	725.4	1369.4	-81.4
Mar	534.7	719.0	1253.7	-184.3
Apr	513.5	711.7	1225.2	-198.2
May	583.0	734.1	1317.2	-151.1

Source: ZIMSTAT, 2024